



Northumberland, Tyne and Wear Comprehensive Local Research Network

Business Plan

2011/12

Optimising Performance

Submitted by Dr Seamus O'Neill, Mrs Penny Williams and Professor Tim Goodship

On behalf of the Executive and Board of NTW CLRN

All correspondence to seamus.o'neill@nuth.nhs.uk

Table of contents

1	Executive Summary and Action Plan	2
2	Overview and Management of the CLRN	5
3	NHS Engagement	7
4	Supporting Life Sciences Industry	8
5	The Role of Specialty Groups	10
6	Increasing Recruitment and Delivering to Time and Target.....	13
7	Research Management and Governance.....	15
8	Patient and Public Involvement	18
9	Workforce Deployment and Development.....	19
10	Financial Management.....	21
Appendix 1	- Outline use of Resources	24
Appendix 2	- SG Leads	25
Appendix 3	- Recruitment to Target.....	27
Appendix 4	- NUTH Delivery Infrastructure.....	30
Appendix 5	- NTW CLRN Training Programme	31

1 Executive Summary

This business plan is submitted to the NIHR CCRN Coordinating Centre (CCRN CC) on behalf of the Board and Executive of Northumberland, Tyne and Wear CLRN. It sets out our strategy, goals and spending plans for 2011/12. We seek NIHR CCRN CC approval for this work and the investment plan proposed.

The strategic direction and funding priorities proposed reflect the Executive and Board's opinion that we need to now focus on **optimising performance**. This reflects a view that the delivery phase of NTW CLRN is well established, infrastructure is in place and the management priority is for optimising current systems and relationships rather than embarking on major change in CLRN operation.

This plan builds on strong performance in the three previous years of NTW CLRN operation. As illustrated in the graph below our year-on-year recruitment continues to show progress. While our absolute numbers this year may not exceed 2009/10 we have compensated for the loss of one study which recruited over 5,000 patients.

This stable, incremental environment will let us focus our agenda towards demonstrating value for money through optimising performance in:

Recruitment - Projected figures for end of 2010/11 are approximately similar to last year at 20,000. We will strive to recruit 21,000 patients in 2011/12 thereby doubling the baseline set in 2008/09 and meeting our contribution to the national ambition ahead of target.

Delivering Industry studies – We will continue to promote the uptake of industry studies within Member Organisations and we will seek to increase the number of active commercial portfolio studies to 32 at any given time.

Time and target – We will continue our efforts to make the North East the 'go to' destination for both academic and commercial research. We believe that predictable delivery of studies to time and target is the major factor that will determine our ability to achieve this ambition. This report sets out a mechanism for monitoring and intervening in studies led within NTW CLRN. Our goal for the end of 2011/12 is that we have less than 20% of studies categorised as 'red' through RAG rating.

RM&G process efficiencies – Through incremental changes we will strive to achieve the national median targets for local and study wide checks (≤ 30 days) for each. We will also reduce the RM&G

expenditure from 11.2% of the total CLRN budget to <10% this year with further reductions to follow.

Evidence of impact – It is increasingly important that we can demonstrate value for money. To do this and to inform future funding decisions we will seek from SGs, Topic Networks and other stakeholders feedback on the impact of investment and of research activity itself in delivering improvements in health care. We will collate and publish impact stories on the CLRN website and feed these into the CRN CC database.

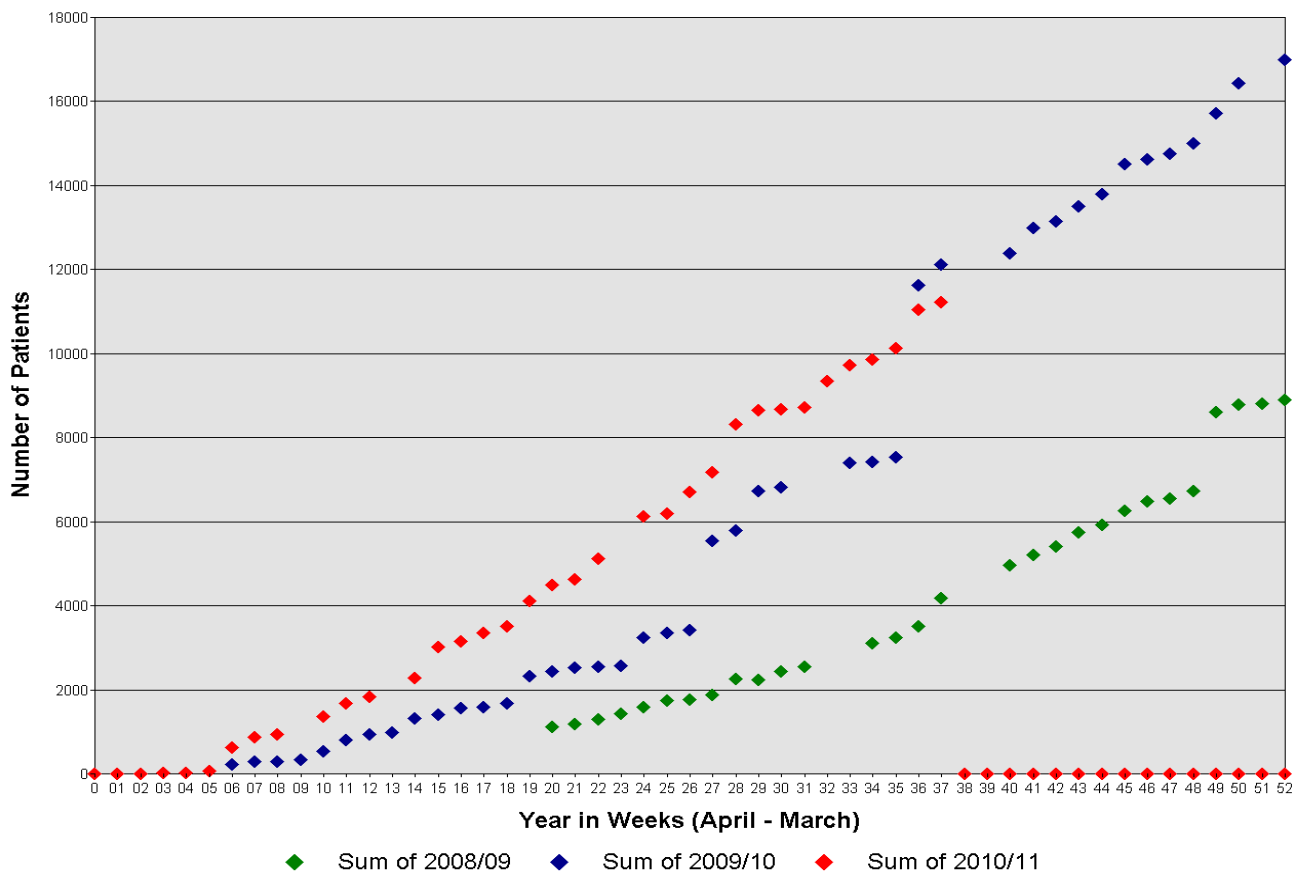
Workforce Development – This will continue to be the major factor underpinning the success of the CLRN. It is now accepted that the CLRN is the principal provider of clinical research training in the region. We will continue to collate and disseminate best practice in mentoring, deployment and career development within multi-disciplinary research teams. We will collate and publish the team and resource structures for each MO before the end of 2011/12. Investment in Clinical Research Associates (CRAs) will develop research-ready clinicians to carry forward the overall agenda.

Throughout the plan we will focus on optimising what already is strong performance and making improvements in key areas such as industry and CSP. The delivery of these improvements will rely on us maintaining and leveraging the excellent working relationships we have with our Member Organisations. We remain grateful for their support both in preparing this plan and in delivering the work it entails.

Figure 1: NTW CLRN Recruitment

In 2009/10 19,943 patients were recruited, including over 5,000 to one very high recruiting diabetes study (DRN120). The cumulative graph below is one we use for monitoring progress year on year; it does not include recruitment reported after financial year-end.

The trajectory of the cumulative recruitment line for this current year 2010/11 – the red diamonds – strongly suggests that we have compensated for the closure of DRN120. If this is the case we will have sustained near doubling of our 2008/09 baseline and it would be further evidence for the stable incremental progression we set out to achieve.



2 Overview and management of the CLRN

The demographics and geography of the CRLN are as described in previous business plans. There have been no significant changes to the MOs, SHA or HEIs with whom we interact. The nationally and locally important units that support clinical research have not changed. We are monitoring closely the changes at SHA and PCT levels and we are working closely with local leaders in primary care to influence developments to the benefit of research.

The Core Team, Board, Executive and CLRN Office

The core team, Board and Executive of NTW CLRN continue to provide continuity and stability. We feel this works well and no major changes are planned for 2011/12. The core team (Figure 2) continues to deliver to the satisfaction of both our Member Organisations and the CCRN CC.

There are a number of centrally managed posts aligned to the CLRN core team which are planned to continue in 2011/12: Nurse Lead, RM&G Manager (x2) and Research Study Coordinators (x4). Each of these initiatives is described elsewhere in this business plan.

Figure 2: The Core Team

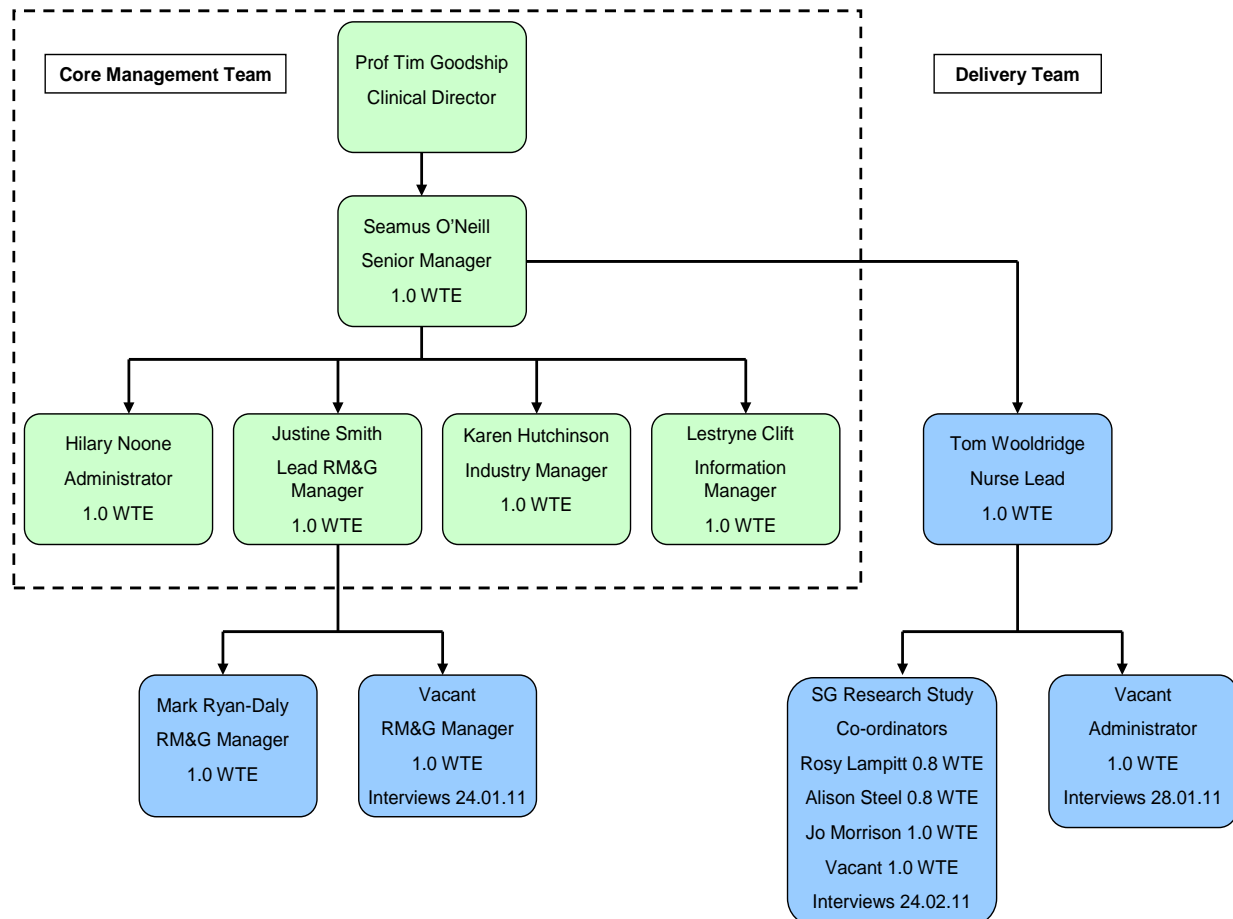
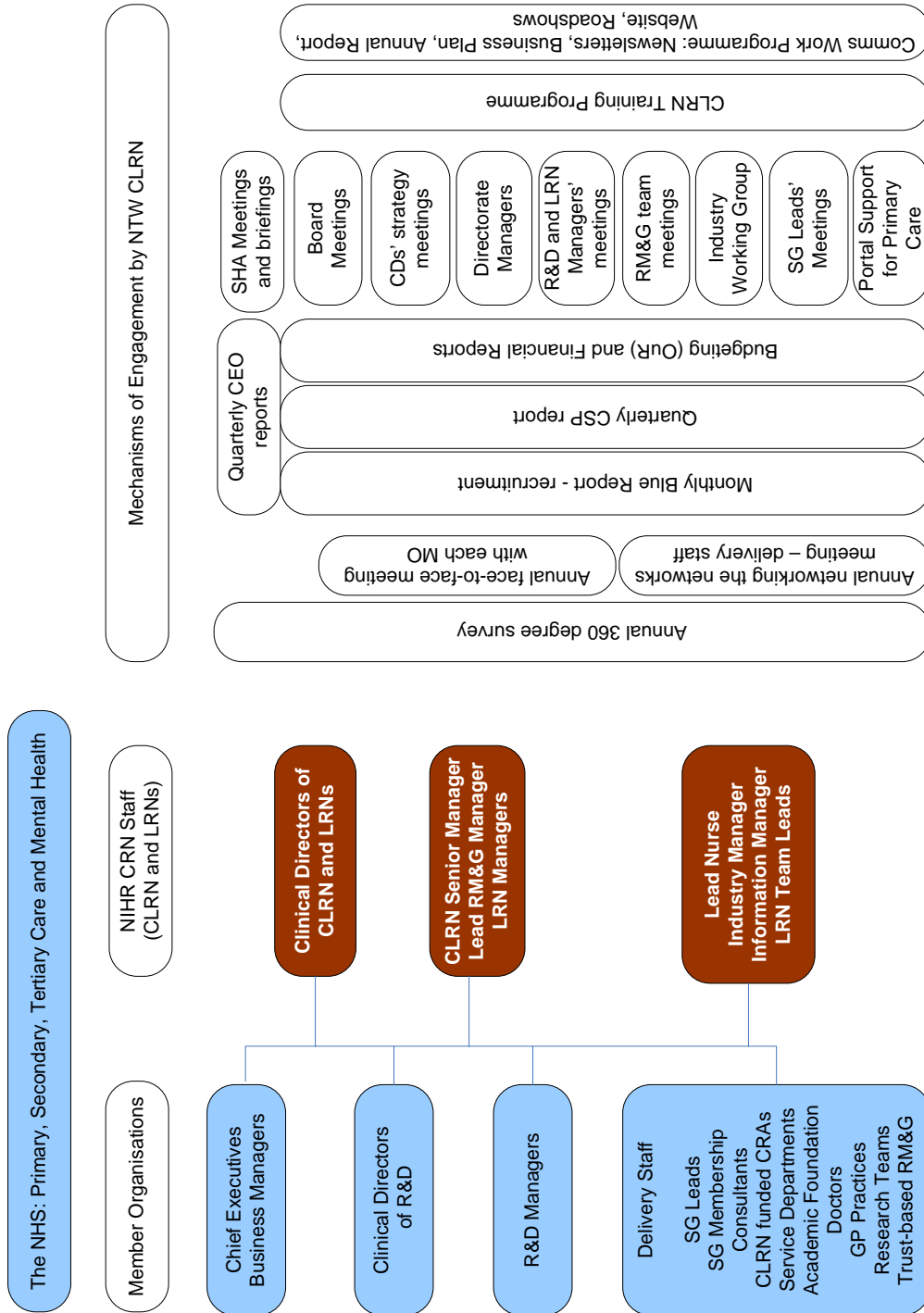


Figure 3: NTW CLRN NHS Engagement



3 NHS Engagement

NHS engagement is the essence of what we do. From the outset NTW CLRN has sought to position its activity in support of our MOs. Persistent engagement to ensure that the CLRN mission and our work programmes are embedded within the NHS is **integral** to day-to-day activity. The core team of NTW CLRN invests much of their time maintaining engagement and relationships across all levels within the NHS and wider stakeholders. Figure 3 describes the multi-faceted approach used.

The Executive have considered and agreed the following deliverables for 2011/12 to build upon work already commenced:

- **Refinement of annual 360^o survey** – this has been a successful initiative in allowing us to gauge the extent to which we are meeting the needs of our stakeholders. We collate and publish the feedback we receive and for each comment we state how we will respond. We will refine this process in light of national guidance being developed on NHS engagement.
- **Specific engagement with R&D offices** (R&D Clinical Directors and Managers of each MO) - through annual senior management team visit to link with the business planning cycle – with a focus on listening to MO's plans and aspirations.
- **Establishing CLRN Surgeries** as regular and frequent events on-site in MOs – senior management team to carry out a rolling programme of visits at each of our MOs. There will be an open and widely disseminated invitation to CIs, PIs, session holders, members of research teams and other interested parties to attend and ask questions of us.
- **Centrally managed initiatives** – continuation of Consultant sessions, Clinical Research Associates and Research Study Coordinators to provide a mechanism for embedding CLRN work in MOs. We believe that this is a crucial element of engagement as, if we do it well, those we support are likely to become advocates for what we do.
- **Continued use of devolved model** – this remains essential for MO buy-in, empowering Trusts to support and deliver research priorities.

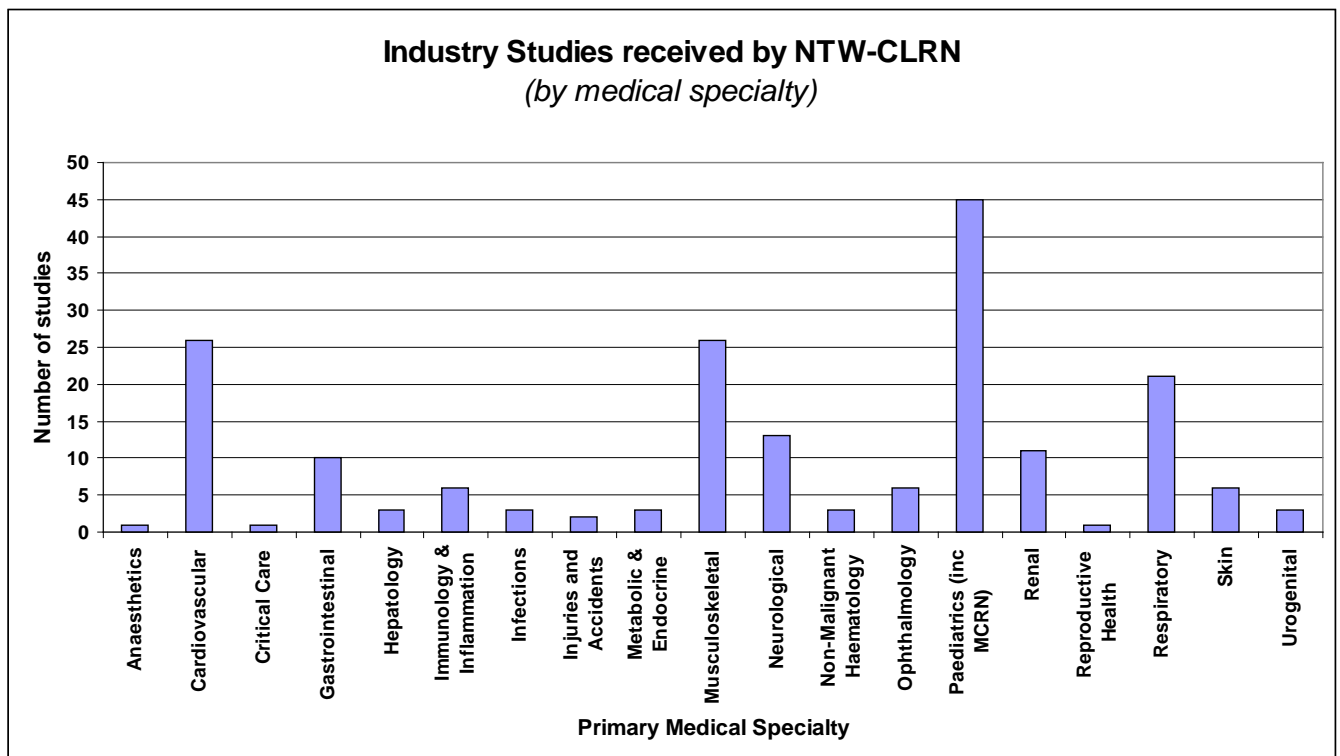
We welcome the focus on NHS engagement and we believe that CLRNs must be seen as part of the NHS. Therefore we have written NHS engagement as a thread throughout this plan and stressed that it is only through demonstrating impact that we will prove our worth within the NHS.

4 Supporting life sciences industry

Our strategy for increasing the number of commercial NIHR portfolio studies in 2011/12 builds on the work of our Industry Manager, Karen Hutchinson and our Exec lead for Industry, Professor Richard Walker. A target of 10% industry studies was set for 2010/11 - a near 100% increase on the previous year – and this is likely to be achieved. Our target for 2011/12 is to increase the absolute number of active industry studies to 32 at any given time. This is an ambitious target as we currently have between 18 and 27 industry studies reporting recruitment each quarter (data taken from the monthly management performance report – ActRep1, December 2010 from NIHR CCRN).

To achieve this increase we will ensure that:

- Specialties and teams being offered most industry studies (see graph) are sufficiently resourced to deliver them



- Industry studies are proactively managed throughout the set-up process and escalated as necessary within the relevant MO hierarchy (roll-out of the Exemplar).
- P/TCRNs are consulted in the implementation of local arrangements to facilitate set-up and delivery of industry studies to the Exemplar goals.

- We meet with senior management and directorate managers of MOs and a) stress the financial benefits to their organisation of contributing to commercial studies b) identify areas where opportunities have been missed through non-responses or refusals at the expression of interest stage c) work with MO business development leads to identify where pump-priming may be beneficial and to address any misconceptions or barriers that remain.

Our approach to NHS engagement on this issue will be to meet with business leaders in the MOs and convince them that commercial portfolio research provides a potential income stream for Trusts and Directorates as they search for efficiency savings. Two such meetings have taken place and a strategy for increasing commercial study activity is being developed with Newcastle upon Tyne Hospitals NHS FT (NUTH have been offered over 80% of our commercial studies). A plan is being drawn up to establish a post within the business management team with a specific remit to develop portfolio business. Although still at early stages of planning, this post is likely to be co-funded by the CLRN and NUTH. The expectation is that this post will become self funding through income attracted by increased commercial portfolio activity. This person would be responsible for:

- Promoting the uptake of portfolio research amongst consultants;
- Escalating issues within the Trust;
- Developing and agreeing a strategy for managing funding flows within the Trust

We believe that for a relatively small investment we can make a significant difference to the profile of commercial research within a major national provider. The model, once established is scalable and can be rolled out across other MOs.

We will, in 2011, make contact with the business development teams of all our MOs and we will provide them with data on the industry studies that could be available to them. We will provide a Trust-specific analysis of studies for which consultants were contacted for expressions of interest but these were not forthcoming. Where relevant a financial estimate of the missed opportunity will also be provided.

We believe that this type of engagement is key to ensuring that the expectation shifts within Directorates so that uptake of commercial portfolio studies becomes the norm.

5 The role of Specialty Groups

SGs in NTW CLRN are responsible for 60% of recruitment, benefit from 60% of funding and deliver 46% of studies. CCRN activity has, as represented by the SGs, provided the majority of the increase in NTW recruitment over the last three years.

Our work with SGs is central to our engagement with the NHS clinical constituencies in which we need to promote the concept of research as a core component of NHS activity. Professor Steve Robson leads this engagement on behalf of the Executive and manages the process primarily through the local SG leads.

The role of the SG leads

NTW CLRN has 21 local SGs and the list of leads is shown in Appendix 2. The Network also hosts two National Specialty Groups Chairs, Professor Sir John Burn – Genetics and Professor J Steele – Oral and Dental. Each national lead receives funding to support this activity.

The expectations of the local SG leads will continue to be refined and clarified. A key recent development in SGs has been the requirement for an annual strategy statement from each SG (described and appended in the 2010/11 Business Plan). The local SG leads prepare this document and they are reviewed by Professor Robson. The strategy statements and the review process will continue to provide the Exec with an insight into performance and potential in each SG. We will ensure that they increasingly inform the MOs in their deployment of devolved resource.

SG leads attend national meetings where potential studies are discussed. They are encouraged to share this information with SGs locally to engage local PIs. Attendance at national meetings will continue to be stressed as part of the role and proactive identification of studies to which local SGs could contribute will be a priority.

Our objectives for 2011/12 are to:

- Refine our performance management of local SGs and develop a clear and understood set of success measures and translate these into annual deliverables for each SG measure eg: number of studies recruiting, number of patients recruited, value for money and impact demonstrated.
- Review the content of the strategy statements and the review meeting, to include measures of impact both in relation to CLRN investment in delivery capacity and also in terms of impact of research on the clinical environment.

- Alter the timescales for completion of strategy documents to align with the CLRN business planning process. Resultant goals and actions will feed the SG requirements more clearly into the production of the MOs OURs.
- Provide the collated information resultant from the SG strategies to the Exec and Board to ensure coherence with overall direction.
- Distil from the reports a summary for each MO of the relevant action expected by the SG within the Trust and then discuss with the Trust how this can best be achieved.
- Review and reform the funding algorithm for allocating admin resource to the SG leads with a view to reassessing need and consolidating resource provision.

We will also explore models for specific cross-Trust initiatives to be developed in the coming year. Specifically, we will seek to support a flexible approach to delivery of SG activity. We are considering a proposal for a cross-Trust post or posts as proposed for Critical Care by South Tyneside, Gateshead and Sunderland and we believe that this could provide a model for activity in other disciplines.

Funding in support of SG activity

We will continue to provide limited funding to SGs leads for administration and travel costs. However, we will develop in 2011/12 a needs-based model for making this allocation. The majority of funding in support of SG delivery will continue to be provided through negotiations between the SG leads or PIs and the MOs as per the finance section.

Figure 4: SG Funding Model

SG Support	Management	Funding
Research Study Coordinators	CLRN Core Team	£150,000
SG leads	Devolved to SG leads	£110,000
SG recruitment	Accessed through MOs	£3,216,000

Cross-CLRN working within SGs

An encouraging development regionally is that SGs have been pro-active in seeking partnerships and developing alliances across NTW and CDTV CLRNs. Some SGs have formal links eg: Non-malignant Haematology and ENT whilst others plan joint meetings eg: Critical Care. Broadly we are seeing the development of communities of practice reflecting NHS structures and priorities rather than NIHR boundaries. We will continue to work with CDTV in 2011/12 to support this developing ethos.

6 Increasing recruitment and delivering to time and target

Having already achieved a near doubling in recruitment within NTW against our 2008/09 baseline, our focus for non-commercial studies in 2011/12 will be on:

- Maintaining, as annual local baselines, the level of recruitment and number of studies we currently have and working towards sustaining an annual 5% increase in recruitment.
- Improving the uptake of studies by PIs in Trusts and clinical specialties that are currently under-represented. Each MO is identifying areas in which investment can deliver expansion and these strategies are being collated.
- Identifying through local SG leads and their CLRN supported network opportunities to contribute to multi-centre studies appropriate to care disciplines in the CLRN. We will collate these opportunities through the admin support to SG leads and ensure that details of the studies are disseminated to potential PIs **and** that uptake is monitored – as it is for industry studies.
- Continuing our obsessional attention-to-detail in identifying eligible portfolio studies in MOs and ensuring that recruitment reporting is up to date. Reporting did not fall below 95% last year and was at 100% for our CIs at the ABF cut-off. The objective for the Portfolio Management Group, led by Professor Goodship is to replicate this in 2011/12.

Improving *delivery to time and target* for studies led by CIs based in NTW is a priority for 2011/12. The baseline figures and monitoring (study RAG) report are presented in Appendix 3 and our target is that less than 20% of studies (from 32% currently) are categorised as ‘red’ through RAG rating. This requires that we convince local CIs that we can assist them in gaining access to local resource and facilitate the conduct of multi-centre studies through partner CLRNs.

Assessment of progress by PIs on multi-centre studies led from outside NTW is a more qualitative process. Our network of contacts (SG leads, PIs, session-holders, R&D Clinical Directors, R&D Managers and members of the core team) are all routinely in conversation with the research community and where issues with particular studies are identified, we will ask the relevant MO to intervene: with additional resource being provided if required. In conjunction with CIs and PIs, MOs are expected to identify remedial action for studies categorised as ‘red’ through RAG rating. Where actions fail to produce a positive impact, Trusts can consider



redistribution of funding to more active areas of research.

In both the areas described above our recently appointed Research Study Coordinators (see right) will play a prominent part. They are a CLRN-wide resource and will both add to our intelligence gathering in identifying studies in need of support and be able to intervene to provide or coordinate practical support for delivery.

7 Research Management & Governance

Our priority for 2011/12 will be to comply with nationally agreed targets as per the Performance Management Framework. We will work with each MO to develop and implement a local strategy that will enable portfolio studies to be approved within the national targets. The deliverables identified below relating to CSP improvements are best understood within the context of the devolved model we have adopted and the recent improvements in turn-around times: these are described briefly below.

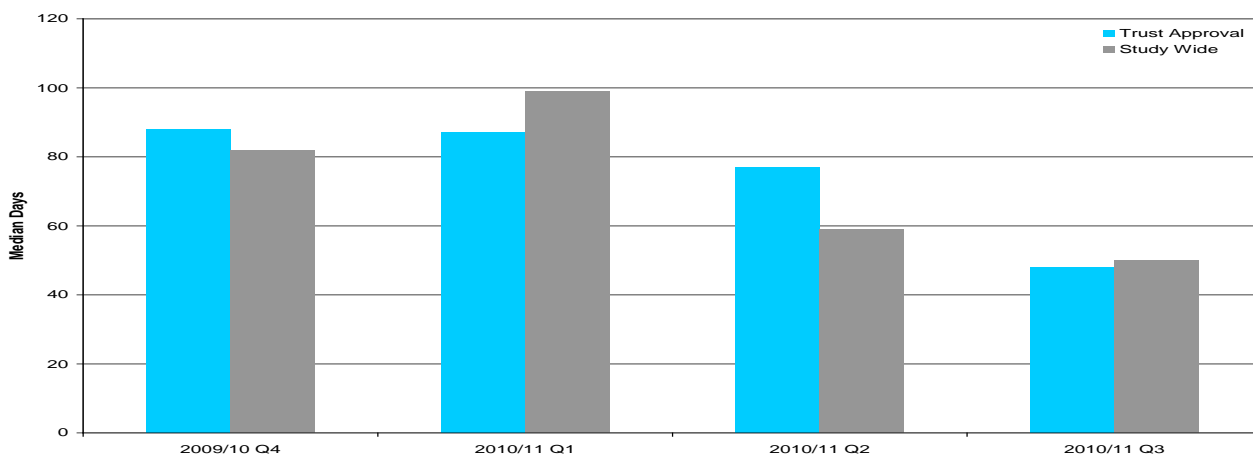
The model for CSP support in MOs

The model for RM&G and CSP infrastructure support continues to be embedded and line-managed within MOs and there are no plans to change this. During 2011/12 the CLRN core RM&G team will work with MOs to agree funding reductions so that NTW falls in line with national guidelines. RM&G funding in NTW currently stands at 11.2% of our total and we need to reduce this to under 10% with further reductions to follow. To commence this process, MOs have been asked to provide details of their RM&G management structure. This will provide greater clarity of roles and responsibilities in terms of RM&G and R&D functions. Allocations will then be reviewed to ensure RM&G activity is funded appropriately.

Improvements made in CSP times

Improvements are being achieved across MOs within the CLRN in terms of CSP times. The median days from SSI form submission to NHS permission letter has fallen from 88 days to 48 and study-wide (global) checks from 99 days to 50 (Figure 5). R&D Departments within MOs have reviewed and amended internal processes to streamline the local approval process and we believe that the effect of this is now beginning to become apparent. During 2011/12 we will work towards

Figure 5: Overall NTW CLRN median for NHS permissions



achieving the national target of ≤ 30 days for each of the study-wide and local components of CSP.

Achieving the national ≤ 30 day targets

To accomplish further reductions and deliver nationally agreed times as per the Performance Management Framework we will:

- Seek detailed CSP improvement plans from each MO to be returned for consideration by the Exec meeting in May 2011. These will include milestones and timelines for continued reductions. We will also ask that they report on how portfolio studies, and in particular industry studies, are prioritised within local processing systems.
- Having received these plans we will collate them and compile and agree with MOs a CLRN-wide action plan. We will complete this by July 2011 and it will go to the August Exec and then the September Board for agreement. This will form the basis of how we respond to the national appraisal of RM&G function and performance.
- During this process we will consult with RM&G teams in those CLRNs who have been successful in reducing sign-off times to learn from their experiences and feed this information into the process.
- We will monitor the developing impact of the Academy of Medical Science Review

RM&G advice and support

To ensure that our local research community is aware of the range of services and support available through the Core CLRN RM&G team and also through the CLRN-funded staff in Trusts we will:

- Update our website to provide researchers with better guidance and resources (to be completed by June 2011). These pages will capture and set out expectations in terms of providing the Research Advice Service.
- Link the RM&G section of the website to Trust R&D pages, to the statements produced by Trusts on management and delivery infrastructure and RSS (September 2011).
- Develop and publicise (through the website, newsletter and other media) the CLRN lead network concept to inform CIs of the services and resources available to support set-up of multi-centre studies through partner CLRNs (September 2011).

Research Passports

Justine Smith, Lead RM&G Manager and Dr Alan Thomas, Exec link for RM&G will continue to work with HR Directors to implement HR Good Practice. Anecdotally, this has had a significant impact. Feedback from TCRN LRN managers, investigators and other key stakeholders has assured us that HR processes associated with movement of staff between sites are more efficient than they have been. However, we do not yet have metrics to confirm whether this is true. In 2011/12 we will identify metrics to measure impact, particularly in terms of timescales from application to issue of research passports. Data will be collected from TCRN LRN managers and investigators which will be analysed and then published by the CLRN.

8 Patient & Public involvement

We have established two significant PPI initiatives to date.

- A patient representative has joined the local Renal SG.
- An awareness-raising initiative in partnership with CDTV CLRN and the North East RDS has been established. This is led by Andrew Robinson, the RDS PPI Officer.

In 2011/12 we will assess the impact of these two initiatives. If they are judged to have been successful we will:

- Encourage other SGs to recruit a patient representative to their membership. We will draw on the expertise of the Renal SG patient representative to assist other patient representatives to identify what their roll will be.
- We will look to establish a forum where the SG patient representatives can meet to share their experiences. We envisage that one of the members of that forum would in due course join the CLRN Board.
- Continue joint funding with CDTV CLRN of RDS PPI Officer.
- Assess the benefit of the PPI awareness-raising workshops. The aim of these is to equip research active staff with skills to develop effective patient and public involvement in their own research. Initial sessions have been well attended and feedback has been excellent.
- Enable the RDS PPI Officer to contact attendees from workshops to assess if further support is required to implement ideas. For instance, one research team plans to develop its own patient focus group.
- Invite RDS PPI Officer to attend the May 2011 CLRN Board meeting to present outcomes and impacts

9 Workforce Deployment and Development

If we are to achieve our vision of an NTW NHS research infrastructure that is truly 'world-class' we need to make sure that we have a stable, motivated and professionally confident workforce. We also need to make sure that the workforce is informed of the priorities and deployed to best effect.

Workforce deployment

We will work with our MOs to refine and optimise the models for infrastructure provision and we will ensure that the provision and its management are well understood by the research community.

NTW CLRN operates a devolved infrastructure model and the requirements of our MOs are varied. We work with one research-intensive teaching Trust and a range of other health care providers with significant research portfolios but very different requirements. The models we support range from the embedded team model used at Newcastle Hospitals NHS Foundation Trust - with clearly identified platforms and teams deployed to cover active disciplines (Appendix 4) – through to the larger secondary care Trusts with teams of centralised, often generic, research nurses which offer greater flexibility to support a number of SG areas. Capturing and describing these models is a priority for 2011/12.

The CLRN has requested that each MO provides details of the CLRN-funded delivery resource available to researchers and also explains the management structures within which this resource is deployed. The Executive will review these models in 2011/12 and we will publish these so that researchers know how resource is deployed on their behalf and how it can be accessed in each Trust.

As well as the embedded infrastructure managed through the Trusts 2011/12 will see the deployment of centrally-managed CLRN-wide support for study set-up. The recent appointment of Research Study Coordinators adds cross-organisational capacity to complement the MO-specific resource. 2011/12 will see this initiative properly embedded in NTW and we will, through Tom Wooldridge - the CLRN Nurse Lead who also line manages these staff - capture and report specific interventions by the team and their impact.

Workforce development

Tom Wooldridge also leads on the CLRN training programme (Appendix 5) which has been published and widely promoted. We are committing £50k to the training programme and Tom will manage this budget and report on it to the Exec.

In 2011/12 there will be 47 training sessions within 14 courses. These will deliver an overall capacity for 1,581 attendees. New developments for the 2011/12 training programme include:

- **A CTIMPs training event for CIs and PIs** – A session run by NUTH in 2010 for their staff had excellent feedback. Tom Wooldridge is working with the NUTH R&D Manager to provide a similar session suitable for a wider CLRN audience.
- **Contracts training** – This has been requested by local RM&G staff and we are currently sourcing speakers to deliver a course for them.
- **GCP training for pharmacy staff** – A GCP course for Pharmacy staff will be organised in collaboration with the local Cancer Research Network.

We will continue to support and contribute to national training developments. Tom Wooldridge is part of the training sub-group within the lead nurse network and both he and Andrea Stutt, the Research Matron in NUTH are NIHR CRN GCP trained facilitators. They will both attend the national training day on GCP in paediatrics which will enable them to establish local paediatrics GCP courses.

Clinical Research Associates

The Clinical Research Associate initiative, run for the first time in 2010 has been extremely popular. There are currently ten NTW CLRN CRAs, junior doctors who each have 5 sessions funding from the CLRN (for one year) to contribute to recruitment into portfolio trials.

All have enrolled in the Certificate/Diploma in Clinical Research run by Newcastle University. These qualifications form the first two years of the Masters in Clinical Research.

We intend to invite applications for a further round of CRAs in 2011/12.

10 Financial Management

NTW CLRN's use of a devolved finance and infrastructure model will continue in 2011/12. Through the Board we have agreed with MOs that we will continue with the local activity based allocation of funds and that local budgets will continue to be managed locally by R&D Clinical Directors.

Three elements of the financial management proposal are set out here for the purposes of clarity and emphasis.

Phased move to fully activity-based MO allocations

The baseline element of funding to MOs is a relic from initial negotiations with MOs when the CLRN was established and accurate assessments of activity levels in each Trust were not available. Now that we have three years' activity figures the Board have requested that we move, over 2 years, to a fully activity-based model. Therefore the funding figures proposed this year are on the basis of reduction of baseline element of funding to 50% with a view to total withdrawal in 2012/13.

Retention of the 5% maximum reduction

Under guidance from the Board we have agreed that the first call on our 10% CLRN contingency will be to limit, to 5%, the maximum fall in any Trust's activity-based allocation. This provides a level of reassurance and stability for MOs and allows them to plan accordingly.

This adjustment to baseline funding has resulted in an increase (from one last year to five this year) in the number of MOs with reductions >5%. The proposal is summarised below (Figure 6).

Executive managed strategic initiatives cross-CLRN

We will continue to provide central funding for:

- **Clinical sessions** – we plan to issue calls for both renewal of existing sessions (£1,600,000) and new sessions (£174,050).
- **Clinical Research Associates** – strategic initiative introduced in 2010/11 to contribute to portfolio studies. The commitment will, funding permitting, be continued and we will seek to identify and support, as a minimum, a further five junior doctors.
- **Centrally managed posts** aligned to the CLRN core team – described previously.
- **Contingency funding** – we are required to hold 10% contingency. We find this problematic and would ideally retain 2%. In our three years of operation we have not needed more than this and late dispersal of funding is unpopular with MOs. It is difficult for them to commit the money within year and there is a strong feeling that late deployment means that full-year

opportunities are missed. We will consult with MOs through the Board to decide how best to manage the contingency funding so that it is available as early as possible to support activity and can be spent in year.

For clarity it should be noted that although these initiatives are managed within the CLRN Exec all the funding is deployed through the relevant MO.

Figure 6: 2011/12 Proposed Funding Allocation

Allocation	£	
		9,797,962
Management		
Staff		303,500
Exec		52,000
Non-staff		28,324
Host & Corporate		61,536
Total management spend		445,360
Delivery	Total delivery spend	9,352,602
Executive-managed expenditure		
Clinical Sessions (allocated in 2010)		1,600,000
Clinical Sessions (new for 2011)		174,050
CLRN wide initiatives		128,000
Training		50,000
Contingency		700,000
Core delivery staff (CLRN Nurse and RM&G)		149,000
Clinical Research Associates (5 x 5 sessions each allocated 2011/1)		150,000
Baseline income for Trusts (50% of 2010/11 allocations)		977,459
Total executive managed spend		3,928,509
Allocations to Trusts		
Total allocation based on complexity-adjusted activity		5,424,093

Funding Scenario 2011/12: Accrual adjusted for complexity and to exclude (from local ABF calculations) studies where n>1000

Trust	Adjusted % of NTW Accrual in year	Activity based allocation for 11/12	Baseline funding (50% 10/11 allocation)	Total projected 11/12 Allocation	Change on 10/11 Allocation
		£	£	£	
City Hospitals Sunderland	5.21	282,595	111,267	399,620	-6%
Gateshead	1.97	106,855	64,953	275,958	-41%
North East Ambulance Service	0.24	13,018	23,129	48,202	-29%
Northumbria Healthcare	11.24	609,668	92,722	702,390	8%
North of Tyne Primary Care Consortium	8.27	448,572	69,565	518,137	-5%
Northumberland Tyne and Wear	6.85	371,550	92,722	464,272	19%
Newcastle Hospitals	55.82	3,027,729	461,257	3,488,986	9%
South of Tyne Primary Care Consortium	8.52	462,133	34,022	496,155	63%
South Tyneside	1.87	101,431	27,822	217,005	-43%

Cost of topping-up to a 5% drop in funding	
City Hospitals Sunderland	5,758
Gateshead	104,150
North East Ambulance Service	12,055
South Tyneside	87,752
Total cost of top-up	209,715

Appendix 1 – Outline use of resources

Member Organisation	Category of Support	Sub-Category	Priority Area	SG	Resource Title	Band	WTE	PA	Cost
City Hospitals Sunderland	RM and G	Management	CRN-wide		R&D Manager	6	0.5		£20,000
City Hospitals Sunderland	RM and G	Management	CRN-wide		R&D Admin	4	1		£20,000
City Hospitals Sunderland	RM and G	Management	CRN-wide		R&D Governance Officer	5	0.5		£15,000
City Hospitals Sunderland	Clinical staff	Nursing	CRN-wide		Clinical Trials Nurse	6	3.5		£150,000
City Hospitals Sunderland	Clinical staff	AHPs	CCRN	Ophthalmology	CTO Ophthalmology	6	1		£35,000
City Hospitals Sunderland	Service Support	Pathology	CRN-wide		Pathology	0	0		£10,000
City Hospitals Sunderland	Service Support	Other	CRN-wide		Labs - Biochemistry	0	0		£7,500
City Hospitals Sunderland	Service Support	Other	CRN-wide		Labs - Haematology	0	0		£7,500
City Hospitals Sunderland	Service Support	Radiology	CRN-wide		Imaging/Radiology	0	0		£10,000
City Hospitals Sunderland	Service Support	Other	CCRN	Ophthalmology	Ophthalmology	0	0		£15,000
City Hospitals Sunderland	Service Support	Pharmacy	CRN-wide		Pharmacy	0	0		£25,000
City Hospitals Sunderland	Clinical staff	Nursing	CRN-wide		Non Staff Costs	0	0		£5,000
City Hospitals Sunderland	Clinical staff	Medical - Exec	NCRN		Clinician Session (Exec) Lyons et al	0		2	£25,000
City Hospitals Sunderland	Clinical staff	Medical - Exec	CCRN	Ophthalmology	Clinician Session (Exec) Steel et al	0		3	£31,250
City Hospitals Sunderland	Clinical staff	Medical - Exec	CCRN	Reproductive Health and Childbirth	Clinician Session (Exec) Hinshaw et al	0		3	£37,500
City Hospitals Sunderland	Clinical staff	Medical - Exec	CCRN	Musculo Skeletal	Clinician Session (Exec) Coady et al	0		1	£12,500
City Hospitals Sunderland	Clinical staff	Medical - Exec	CCRN	Paediatrics	Clinician Session (Exec) Gillespie et al	0		2	£18,750
City Hospitals Sunderland	Clinical staff	Medical - Exec	SRN		Clinician Session (Exec) - O'Connell et al	0		2	£25,000
City Hospitals Sunderland	Clinical staff	Medical - Exec	CCRN	Non-Malignant Haematology	Clinician Session (Exec) - Marshall et al	0		1	£12,500
City Hospitals Sunderland	Non-Clinical Delivery staff	CLRN Mgmt/Support	CRN-wide		R&D Data Manager	5	1		£27,500
City Hospitals Sunderland	Clinical staff	Nursing	CCRN	Reproductive Health and Childbirth	CTO O&G	6	1		£34,500
City Hospitals Sunderland	Clinical staff	Medical - Exec	CCRN	Hepatology	Clinician Session (Exec) - Hobday et al	0		1	£12,500
City Hospitals Sunderland	Clinical staff	Medical - Exec	CCRN	Respiratory	Clinician Session (Exec) - Taylor et al	0		1	£6,250
City Hospitals Sunderland	Non-Clinical Delivery staff	CLRN Mgmt/Support	CRN-wide		R&D Admin	4	1		£20,000
Gateshead FT	Clinical staff	Nursing	NCRN		Research Nurse - Gyne Oncology (P Carmody)	6	0.8		£28,600
Gateshead FT	Clinical staff	Nursing	DRN		Research Nurse (L Ingoe)	6	0.8		£28,600
Gateshead FT	Clinical staff	Nursing	Dendron		Research Nurse (T Silvester)	6	0.8		£28,600
Gateshead FT	Clinical staff	Nursing	CCRN	Musculo Skeletal	Research Nurse (S Pugmire)	6	0.8		£28,600
Gateshead FT	RM and G	Management	CRN-wide		Research Governance Assistant (Y Marriott)	4	1		£24,020
Gateshead FT	Other	Management	CRN-wide		R&D Manager (A Harvey)	7	0.6		£25,670
Gateshead FT	Service Support	Pharmacy	CRN-wide		Pharmacy Technician (D Sproates)	7	0.7		£29,950
Gateshead FT	Service Support	Other	CRN-wide		Generic Service Support	0	0		£38,908
Gateshead FT	Clinical staff	Medical - Exec	NCRN		Clinical Session (Exec) - R Edmondson et al	0		2	£18,750
Gateshead FT	Clinical staff	Medical - Exec	CCRN	Musculo Skeletal	Clinical Session (Exec) - C Kelly et al	0		3	£31,250
Gateshead FT	Clinical staff	Medical - Exec	CCRN	Paediatrics	Clinical Session (Exec) - A Dale et al	0		1	£6,250
Gateshead FT	Clinical staff	Medical - Exec	DRN		Clinical Session (Exec) - J Weaver et al	0		2	£25,000
Gateshead FT	Clinical staff	Medical - Exec	Dendron		Clinical Session (Exec) - A Thomas	0		1	£12,500
Gateshead FT	Clinical staff	Medical - Exec	CCRN	Injury and Accident	Clinical Session (Exec) - R Jarman	0		1	£6,250
Gateshead FT	Clinical staff	Medical - Exec	SRN		Clinical Session (Exec) - T Cassidy	0		1	£6,250
Gateshead FT	Clinical staff	Nursing	CCRN	Critical Care	Research Nurse - Gen Med/Critical Care	6	0.8		£28,600
Gateshead FT	Service Support	Other	CRN-wide		Research Facilitator (W McCormick)	4	0.6		£14,410
Gateshead FT	Clinical staff	Medical - Exec	CCRN	Critical Care	Clinical Session (Exec) - V Linnett	0		1	£6,250
NEAS	RM and G	Management	CRN-wide		R&D Manager	7	0.5		£25,285
NEAS	Service Support	Other	CRN-wide		PILFAST, 3DN, HITS-NS	0	0		£19,017
NEAS	Clinical staff	Nursing	CRN-wide		8% Non Staff Allowance	0	0		£3,900
Northumbria Healthcare	Clinical staff	Nursing	CCRN	CRN-wide	Research Nurse (MA)	6	1		£42,052
Northumbria Healthcare	Clinical staff	Nursing	CCRN	Musculo Skeletal	Research Nurse (KW)	6	1		£42,052

Northumbria Healthcare	Clinical staff	Nursing	CCRN	CRN-wide	Research Nurse (CA-R)	6	0.6	£25,232
Northumbria Healthcare	Clinical staff	Nursing	CCRN	Gastro Intestinal	Research Nurse (LF)	6	0.5	£21,026
Northumbria Healthcare	Clinical staff	Nursing	CCRN	Reproductive Health and Childbirth	Research Nurse (HH)	6	1	£40,065
Northumbria Healthcare	Clinical staff	Nursing	CCRN	CRN-wide	Senior Research Nurse (AW)	7	0.6	£26,792
Northumbria Healthcare	RM and G	Management	CRN-wide		Office Coordinator (NC)	5	1	£31,331
Northumbria Healthcare	RM and G	Management	CRN-wide		Admin Support (LC)	3	0.4	£9,140
Northumbria Healthcare	RM and G	Management	CRN-wide		RM&G Facilitator (AW)	5	1	£28,982
Northumbria Healthcare	RM and G	Management	CRN-wide		RM&G Manager (CP)	8a	0.9	£50,096
Northumbria Healthcare	RM and G	Management	CRN-wide		R&D Director	0	0.05	£3,000
Northumbria Healthcare	Service Support	Pharmacy	CRN-wide		Senior Pharmacist	8a	0.2	£21,347
Northumbria Healthcare	Service Support	Pharmacy	CRN-wide		Pharmacy Technician	5	1.5	£50,800
Northumbria Healthcare	Clinical staff	AHPs	CRN-wide		Health Psychologist	8b	0.3	£10,289
Northumbria Healthcare	Non-Clinical Delivery staff	CLRN Mgmt/Support	CRN-wide		Finance Management Support	0	0	£9,648
Northumbria Healthcare	Non-Clinical Delivery staff	CLRN Mgmt/Support	CRN-wide		Human Resource Admin Support	0	0	£8,898
Northumbria Healthcare	Service Support	Pharmacy	NCRN		Northumbria Pharmacy Technician	5	0.5	£16,934
Northumbria Healthcare	Service Support	Radiology	CCRN	CRN-wide	Mid-grade Radiologist (NT&WGH)	6	1	£38,594
Northumbria Healthcare	Service Support	Pathology	CRN-wide		Pathology Support	0	0	£8,000
Northumbria Healthcare	Clinical staff	Medical - Exec	CCRN	Critical Care	Clinical Session (Exec) - F Birrell et al	0	3	£31,250
Northumbria Healthcare	Clinical staff	Medical - Exec	Dendron		Clinical Session (Exec) - R Walker et al	0	2	£25,000
Northumbria Healthcare	Clinical staff	Medical - Exec	SRN		Clinical Session (Exec) - C Price et al	0	2	£25,000
Northumbria Healthcare	Clinical staff	Medical - Exec	CCRN	Gastro Intestinal	Clinical Session (Exec) - S Kelly et al	0	1	£6,250
Northumbria Healthcare	Clinical staff	Medical - Exec	CCRN	Musculo Skeletal	Clinical Session (Exec) - M Reed et al	0	2	£18,750
Northumbria Healthcare	Clinical staff	Medical - Exec	CCRN	Paediatrics	Clinical Session (Exec) - A Colver	0	1	£12,500
Northumbria Healthcare	Clinical staff	Nursing	CRN-wide		Research Nurse (JD)	6	0.8	£28,035
Northumbria Healthcare	Clinical staff	Nursing	CCRN	CRN-wide	Senior Research Nurse (PH)	7	1	£49,393
Northumbria Healthcare	Clinical staff	Nursing	CCRN	CRN-wide	Junior Research Nurse (SS)	5	1	£32,574
Northumbria Healthcare	Clinical staff	AHPs	CCRN	CRN-wide	Clinical Trials Assistant (AB)	4	0.5	£9,866
Northumbria Healthcare	Clinical staff	Nursing	SRN		Research Nurse	5	0.5	£16,933
Northumbria Healthcare	Clinical staff	Nursing	CCRN	CRN-wide	Research Nurse (DG)	0	0.4	£16,821
Northumbria Healthcare	RM and G	Management	CRN-wide		Non staff Costs	0	0	£3,000
Northumbria Healthcare	Clinical staff	AHPs	CRN-wide		Physiologist	6	0.5	£21,026
Northumbria Healthcare	Clinical staff	Medical - Exec	SRN		Clinical session (Exec) - H Rodgers	0	1	£12,500
Northumbria Healthcare	Clinical staff	Medical - Exec	NCRN		Clinical session (Exec) - C Williams et al	0	1	£6,250
Northumbria Healthcare	Clinical staff	Nursing	CCRN	CRN-wide	Junior Research Nurse	5	1	£33,867
Northumbria Healthcare	Clinical staff	Medical - Exec	CCRN	Respiratory	Clinical session (Exec) - S Bourke et al	0	1	£12,500
Northumbria Healthcare	Clinical staff	Medical - Exec	CCRN	Reproductive Health and Childbirth	Clinical session (Exec) - S MacKenzie	0	1	£6,250
Northumbria Healthcare	Clinical staff	Medical - Exec	CCRN	Critical Care	Clinical Session (Exec) - E Sykes	0	1	£6,250
North Tyneside PCT	Clinical staff	AHPs	SRN		Speech and Language Therapist	5	0.1	£3,870
North Tyneside PCT	Clinical staff	AHPs	PCRN		Speech and Language Therapist	7	0.3	£10,000
North Tyneside PCT	Clinical staff	Medical - PC Pract	PCRN		GP Sessions - 3+ Practice Initiative	0	0	£55,000
North Tyneside PCT	RM and G	Management	CRN-wide		Admin Support - Governance (S Hudson)	4	0.5	£13,450
North Tyneside PCT	RM and G	Management	CRN-wide		RM&G Officer - commissioning (B Davies)	5	1	£25,542
North Tyneside PCT	RM and G	Management	CRN-wide		RM&G provider	0	1	£25,542
North Tyneside PCT	RM and G	Management	CRN-wide		RM&G Manager (C Adams)	7	0.6	£24,501
North Tyneside PCT	RM and G	Management	CRN-wide		Manager (S Haining)	8b	0.1	£6,397
North Tyneside PCT	Service Support	Other	PCRN		Study specific SSC's	0	0	£93,641
North Tyneside PCT	Non-Clinical Delivery staff	CLRN Mgmt/Support	PCRN		Research Practice Support Admin (S Hudson)	4	0.5	£13,450
North Tyneside PCT	Non-Clinical Delivery staff	CLRN Mgmt/Support	PCRN		Facilitator jointly funded by South of Tyne (S Tremble)	6	0.5	£15,315
North Tyneside PCT	Non-Clinical Delivery staff	CLRN Mgmt/Support	CRN-wide		HR support	0	0	£5,000
North Tyneside PCT	Non-Clinical Delivery staff	CLRN Mgmt/Support	CRN-wide		Finance (Provider and commissioning)	0	0	£10,000
North Tyneside PCT	Clinical staff	Nursing	PCRN		Research nurse	6	1	£37,465
North Tyneside PCT	Clinical staff	Nursing	DRN		Diabetes nurse in primary care (J Ducker)	6	0.5	£27,758

North Tyneside PCT	Clinical staff	Nursing	CRN-wide		Non Staff Costs (Travel)	0	0	£5,000
North Tyneside PCT	Clinical staff	Nursing	Dendron		Research in primary care (C Abley)	8a	0.1	£5,000
North Tyneside PCT	Other	Workforce Development	CRN-wide		Non Staff Costs (Training)	0	0	£3,000
North Tyneside PCT	Clinical staff	Medical - PC Pract	PCRN		PC Practice Support - Level 0 Practices (3)	0	0	£3,000
North Tyneside PCT	Clinical staff	Medical - PC Pract	PCRN		PC Practice Support - Level 1 Practices (4)	0	0	£8,000
North Tyneside PCT	Clinical staff	Medical - PC Pract	PCRN		PC Practice Support - Level 2 Practices (3)	0	0	£9,000
North Tyneside PCT	Clinical staff	Medical - PC Pract	PCRN		PC Practice Support - Level 3 Practices (5)	0	0	£20,000
North Tyneside PCT	Clinical staff	Medical - PC Pract	PCRN		GP emerging consortia support & West Locality	0	0	£50,000
North Tyneside PCT	Clinical staff	Medical - Exec	CCRN	Age and Ageing	Clinical sessions - Exec (S Kerr)	0	1	£6,250
North Tyneside PCT	Clinical staff	Medical - Exec	PCRN		Clinical sessions - Exec (S Wilkes)	0	1	£12,500
North Tyneside PCT	Clinical staff	Medical - Exec	DRN		Clinician session - Exec (G Hawthorne)	0	1	£6,250
North Tyneside PCT	Non-Clinical Delivery staff	CLRN Mgmt/Support	PCRN		Practice Initiative Lead	7	0.5	£22,617
North Tyneside PCT	Non-Clinical Delivery staff	CLRN Mgmt/Support	CRN-wide		Portfolio Lead in PCT (S Haining)	8b	0.4	£25,589
NTW	Clinical staff	AHPs	PCRN		Graduate Mental Health Worker (L Savage)	6	1	£28,000
NTW	Clinical staff	Medical - Local	MHRN		Clinical sessions - local (Thomas Meyer)	0	1	£6,250
NTW	Clinical staff	Medical - Local	MHRN		Clinical sessions - local (Jan Scott)	0	2	£18,750
NTW	Clinical staff	Medical - Local	MHRN		Clinical sessions - local (Adi Sharma)	0	1	£12,500
NTW	Clinical staff	Medical - Local	MHRN		Clinical sessions - local (Stuart Watson)	0	1	£6,250
NTW	Clinical staff	Medical - Local	MHRN		Clinical sessions - local (Hamish McAllister Williams)	0	1	£12,500
NTW	Clinical staff	Medical - Local	MHRN		Clinical sessions - local (Helen McConachie)	0	1	£6,250
NTW	Clinical staff	Medical - Local	MHRN		Clinical Sessions - local, Trainee CSO. Dementia and Adult Psychiatry	4	1	£22,500
NTW	Clinical staff	Medical - Local	Dendron		Clinician Time - Speciality Doctor	0	1	£12,500
NTW	Clinical staff	Medical	CRN-wide		Non Staff Costs	0	0	£6,000
NTW	RM and G	Management	CRN-wide		HR	4	0.1	£4,000
NTW	Non-Clinical Delivery staff	CLRN Mgmt/Support	CRN-wide		Finance	4	0.1	£4,000
NTW	RM and G	Management	CRN-wide		RM&G Facilitator	5	1	£26,000
NTW	Service Support	Pharmacy	Dendron		Pharmacy Technician (S Routledge)	5	0.5	£13,717
NTW	Service Support	Pharmacy	MHRN		Pharmacist (P Davis)	8a	0.2	£11,464
NTW	Service Support	Radiology	Dendron		Radiology	0	0	£30,000
NTW	Service Support	Radiology	MHRN		Radiology	0	0	£30,000
NTW	Clinical staff	Nursing	MHRN		MHRN - CPN support for recruitment (Weatman & Stanton)	6	2	£72,766
NTW	Clinical staff	Medical - Exec	MHRN		Clinical Sessions - Exec (H McConachie et al)	0	1	£12,500
NTW	Clinical staff	Medical - Exec	CCRN	Paediatrics	Clinical Sessions - Exec (A LeCouteur)	0	1	£12,500
NTW	Clinical staff	Medical - Exec	Dendron		Clinical Sessions - Exec (B Barber et al)	0	4	£43,750
NTW	Clinical staff	Medical - Exec	MHRN		Clinical Sessions - Exec (N Ferrier)	0	1	£12,500
NTW	Clinical staff	Medical - Exec	MHRN		Clinical Sessions - Exec (S Watson)	0	1	£6,250
NTW	Clinical staff	Medical - Exec	MHRN		Clinical Sessions - Exec (N Ahuja)	0	1	£6,250
NTW	Clinical staff	Medical - Exec	MHRN		Clinical Sessions - Exec (V Grahame)	0	1	£6,250
NTW	Clinical staff	Medical - Exec	MHRN		Clinical Sessions - Exec (R McAllister-Williams)	0	1	£6,250
NTW	Clinical staff	Medical - Exec	Dendron		Clinical Sessions - Exec (J Richardson)	0	1	£12,500
NTW	RM and G	Management	CRN-wide		R&D Manager	8b	0.1	£6,000
NTW	Clinical staff	AHPs	MHRN		Clinician time - Clinical Psychologist/Affective disorder - P Gallagher	8a	1	£49,900
NTW	Clinical staff	Medical - Exec	Dendron		Clinical sessions - Exec (B Singh)	0	1	£6,250

NTW	Clinical staff	Medical - Local	Dendron		Clinical sessions - local (Andrew Byrne)	0	1	£6,250
NTW	Clinical staff	Medical - Local	Dendron		Clinical sessions - local (Baldiv Singh)	0	1	£6,250
NTW	Clinical staff	Medical - Local	Dendron		Clinician time - Trainee CSO (Dementia)	4	1	£22,500
NTW	Clinical staff	Nursing	Dendron		Clinical time (J Robinson, Sunderland)	6	0.1	£4,000
NTW	Clinical staff	Nursing	Dendron		Clinical time (J Huaton, NUTH)	6	0.1	£4,000
NTW	Clinical staff	Nursing	Dendron		Clinical time (S Halt, Ghd)	6	0.1	£4,000
NTW	Clinical staff	Nursing	Dendron		Clinical time	6	0.1	£4,000
NTW	Clinical staff	Nursing	Dendron		Clinical time	6	0.1	£4,000
NTW	Clinical staff	Nursing	Dendron		Clinical time	6	0.1	£4,000
NTW	Clinical staff	Medical - Exec	Dendron		Clinical sessions - Exec (A Byrne)	0	1	£6,250
NTW	Clinical staff	Medical - Exec	Dendron		Clinical sessions - Exec (H Grunze)	0	1	£12,500
NTW	Clinical staff	Nursing	MHRN		Research Nurse	6	0.6	£25,925
Newcastle Hospitals FT	Clinical staff	Nursing	CCRN	Anaesthetics	Research Nurse	6	1	£25,427
Newcastle Hospitals FT	Clinical staff	AHPs	CCRN	Musculo Skeletal	Reserarch Physiotherapist	7	1	£35,588
Newcastle Hospitals FT	Clinical staff	Nursing	CCRN	Musculo Skeletal	Research Nurse	7	0.5	£20,941
Newcastle Hospitals FT	Clinical staff	Nursing	CCRN	Cardiovascular	Research Nurse	6	1	£35,588
Newcastle Hospitals FT	Clinical staff	AHPs	CCRN	Cardiovascular	Research Physiologist	7	1	£31,412
Newcastle Hospitals FT	Clinical staff	Nursing	CCRN	Surgery	Research Nurse	7	1	£37,818
Newcastle Hospitals FT	Clinical staff	Nursing	CCRN	Cardiovascular	Research Nurse	7	0.2	£8,377
Newcastle Hospitals FT	Clinical staff	AHPs	CCRN	Clinical Genetics	Research Physio	7	0.5	£21,217
Newcastle Hospitals FT	Clinical staff	Nursing	CCRN	Surgery	Research Nurse	7	0.7	£28,899
Newcastle Hospitals FT	Clinical staff	Nursing	CCRN	Infectious Diseases and Microbiology	Research Nurse	6	1	£35,588
Newcastle Hospitals FT	Clinical staff	Nursing	CCRN	Gastro Intestinal	Research Nurse	6	0.8	£26,164
Newcastle Hospitals FT	Clinical staff	Nursing	CCRN	Gastro Intestinal	Research Nurse	7	1	£33,884
Newcastle Hospitals FT	Clinical staff	Nursing	CCRN	Hepatology	Research Nurse	6	1	£35,588
Newcastle Hospitals FT	Clinical staff	Nursing	CCRN	Dermatology	Research Nurse	6	1	£28,474
Newcastle Hospitals FT	Clinical staff	Nursing	CCRN	Paediatrics	Research Nurse	7	1	£33,884
Newcastle Hospitals FT	Clinical staff	Nursing	CCRN	Paediatrics	Research Nurse	6	1	£26,309
Newcastle Hospitals FT	Clinical staff	Nursing	CCRN	Paediatrics	Research Nurse	6	0.2	£7,988
Newcastle Hospitals FT	Clinical staff	Nursing	CCRN	Paediatrics	Research Nurse	6	0.5	£17,794
Newcastle Hospitals FT	Clinical staff	Nursing	CCRN	Age and Ageing	Research Nurse	6	0.8	£21,908
Newcastle Hospitals FT	Clinical staff	Nursing	CCRN	Musculo Skeletal	Research Nurse	6	1	£26,309
Newcastle Hospitals FT	Clinical staff	Nursing	CCRN	Musculo Skeletal	Research Nurse	6	1	£25,427
Newcastle Hospitals FT	Clinical staff	Nursing	CCRN	Renal	Research Nurse - was MSK, now Renal	6	1	£25,427
Newcastle Hospitals FT	Clinical staff	Nursing	CCRN	Nervous System Disorders	Research Nurse	6	1	£28,474
Newcastle Hospitals FT	Clinical staff	Nursing	CCRN	Reproductive Health and Childbirth	Research Nurse	7	1	£32,705
Newcastle Hospitals FT	Clinical staff	Nursing	CCRN	Reproductive Health and Childbirth	Research Midwife	6	0.6	£16,431
Newcastle Hospitals FT	Clinical staff	Nursing	CCRN	Reproductive Health and Childbirth	Research Midwife	6	1	£28,474
Newcastle Hospitals FT	Clinical staff	Nursing	CCRN	Reproductive Health and Childbirth	Research Midwife	6	1	£35,588
Newcastle Hospitals FT	Clinical staff	Nursing	CCRN	Respiratory	Research Nurse	6	1	£27,385
Newcastle Hospitals FT	Clinical staff	Nursing	CCRN	Metabolic and Endocrine	Research Nurse	7	0.2	£17,085
Newcastle Hospitals FT	Clinical staff	Nursing	CCRN	Dermatology	Research Nurse	6	1	£29,558
Newcastle Hospitals FT	Clinical staff	Nursing	CCRN	Metabolic and Endocrine	Radiographer	7	1	£40,506
Newcastle Hospitals FT	Clinical staff	Nursing	NCRN		Research Nurse - Paeds	7	0.5	£20,941
Newcastle Hospitals FT	Clinical staff	Nursing	NCRN		Trails Assistant - Adult	4	1	£20,555
Newcastle Hospitals FT	Clinical staff	Nursing	NCRN		Research Nurse - Adult	6	1	£33,884
Newcastle Hospitals FT	Clinical staff	Nursing	NCRN		Research Nurse - Adult	6	1	£28,474
Newcastle Hospitals FT	Clinical staff	Nursing	NCRN		Research Nurse - Haematology	6	1	£31,656
Newcastle Hospitals FT	Service Support	Medical	NCRN		Clinical Trials Officer - Haematology	6	0.5	£14,237
Newcastle Hospitals FT	Clinical staff	Nursing	SRN		Research Nurse	7	1	£36,639
Newcastle Hospitals FT	Clinical staff	Nursing	SRN		Research Nurse	6	0.6	£17,085
Newcastle Hospitals FT	Service Support	Pathology	CRN-wide		Pathology - Cellular Pathology in lieu of sessions (identified on 08/09)	6	1	£23,706
Newcastle Hospitals FT	Clinical staff	Other	CCRN	CRN-wide	NIHR Operations Manager	8b	1	£61,689
Newcastle Hospitals FT	Non-Clinical Delivery staff	Support	CRN-wide		HR	4	1	£22,309
Newcastle Hospitals FT	Non-Clinical Delivery staff	CLRN Mgmt/Support	CRN-wide		Non Staff Costs	6	0.3	£11,637
Newcastle Hospitals FT	Service Support	Radiology	CRN-wide		Radiographer	6	1	£41,540

Newcastle Hospitals FT	Service Support	Radiology	CRN-wide		Radiographer	6	0.6	£34,502
Newcastle Hospitals FT	Service Support	Trust based	CRN-wide		Haematology/Bio Technician	6	1	£26,287
Newcastle Hospitals FT	Clinical staff	Nursing	CRN-wide		Research Matron	8a	1	£56,948
Newcastle Hospitals FT	Service Support	Other	CRN-wide		Cardiology Technician	6	1	£38,175
Newcastle Hospitals FT	Service Support	Pharmacy	CRN-wide		Pharmacy Technician	5	0.9	£33,237
Newcastle Hospitals FT	Service Support	Pharmacy	CRN-wide		Pharmacy Technician	5	0.9	£28,251
Newcastle Hospitals FT	Service Support	Pharmacy	CRN-wide		Pharmacy Technician	6	0.9	£41,540
Newcastle Hospitals FT	Service Support	Pharmacy	CRN-wide		Pharmacy Technician	4	1	£22,309
Newcastle Hospitals FT	Non-Clinical Delivery staff	CLRN Mgmt/Support	CCRN	Dermatology	Data Manager	4	1	£21,774
Newcastle Hospitals FT	Service Support	Pharmacy	CRN-wide		Dispensing Clerk	3	0.9	£22,309
Newcastle Hospitals FT	Service Support	Pharmacy	CRN-wide		Dispensing Clerk	3	0.9	£22,309
Newcastle Hospitals FT	Service Support	Other	CRN-wide		MPE	8c	0.2	£10,745
Newcastle Hospitals FT	Non-Clinical Delivery staff	CLRN Mgmt/Support	CCRN	Respiratory	Data Manager	4	1	£23,993
Newcastle Hospitals FT	Non-Clinical Delivery staff	CLRN Mgmt/Support	CCRN	Paediatrics	Data Manager	4	1	£19,959
Newcastle Hospitals FT	Non-Clinical Delivery staff	CLRN Mgmt/Support	CCRN	Musculo Skeletal	Data Manager	4	1	£21,774
Newcastle Hospitals FT	Non-Clinical Delivery staff	CLRN Mgmt/Support	CCRN	Renal	Data Manager	4	1	£26,287
Newcastle Hospitals FT	Non-Clinical Delivery staff	CLRN Mgmt/Support	SRN		Data Manager	4	0.5	£11,575
Newcastle Hospitals FT	Non-Clinical Delivery staff	CLRN Mgmt/Support	CCRN	Paediatrics	Data Manager	4	1	£22,309
Newcastle Hospitals FT	Non-Clinical Delivery staff	CLRN Mgmt/Support	NCRN		Data Manager	4	1	£26,287
Newcastle Hospitals FT	Non-Clinical Delivery staff	CLRN Mgmt/Support	CRN-wide		Data Manager	4	1	£20,527
Newcastle Hospitals FT	Service Support	Other	CCRN	Injury and Accident	Trial Co-ordinator	5	1	£26,287
Newcastle Hospitals FT	Service Support	Other	CCRN	Hepatology	Trial Co-ordinator	5	1	£26,287
Newcastle Hospitals FT	Service Support	Other	CCRN	Paediatrics	Trial Co-ordinator	5	1	£25,643
Newcastle Hospitals FT	Service Support	Other	NCRN		Trial Co-ordinator	5	1	£27,337
Newcastle Hospitals FT	Service Support	Other	CRN-wide		Trial Co-ordinator (Medical Physics)	5	0.5	£20,770
Newcastle Hospitals FT	Non-Clinical Delivery staff	Other	CCRN	Reproductive Health and Childbirth	Secretary	3	0.2	£5,555
Newcastle Hospitals FT	Non-Clinical Delivery staff	Other	CCRN	Reproductive Health and Childbirth	Secretary	3	1	£21,084
Newcastle Hospitals FT	Non-Clinical Delivery staff	CLRN Mgmt/Support	CRN-wide		Database Manager	6	1	£41,536
Newcastle Hospitals FT	RM and G	Management	CRN-wide		Clerical Assistant	3	1	£22,309
Newcastle Hospitals FT	RM and G	Management	CRN-wide		Secretary	3	1	£19,247
Newcastle Hospitals FT	RM and G	Management	CRN-wide		TBA - Clerical Assistant	2	1	£18,050
Newcastle Hospitals FT	RM and G	Management	CRN-wide		RM&G Manager	7	1	£45,673
Newcastle Hospitals FT	RM and G	Management	CRN-wide		R&D Facilitator (CSP and passports admin)	5	1	£33,237
Newcastle Hospitals FT	RM and G	Management	CRN-wide		R&D Facilitator	5	1	£26,287
Newcastle Hospitals FT	RM and G	Management	CRN-wide		RMG Manager	7	1	£38,175
Newcastle Hospitals FT	RM and G	Management	CRN-wide		RMG Manager	7	1	£44,143
Newcastle Hospitals FT	Clinical staff	Nursing	CRN-wide		Non pay	0	0	£100,000
Newcastle Hospitals FT	Clinical staff	Nursing	CRN-wide	Surgery	Research Nurse	5	1	£25,522
Newcastle Hospitals FT	Other	Workforce Development	CRN-wide		Training	0	0	£60,000
Newcastle Hospitals FT	Clinical staff	Nursing	CCRN	Ear nose and Throat	Nurse Specialist	7	0.2	£8,308
Newcastle Hospitals FT	Clinical staff	Medical - Exec	NCRN		Clinical Sessions - Exec (F Douglas)	0	1	£6,250
Newcastle Hospitals FT	Clinical staff	Medical - Exec	NCRN		Clinical Sessions - Exec (J Hale et al)	0	2	£25,000
Newcastle Hospitals FT	Clinical staff	Medical - Exec	NCRN		Clinical Sessions - Exec (A Lennard et al)	0	2	£18,750
Newcastle Hospitals FT	Clinical staff	Medical - Exec	NCRN		Clinical Sessions - Exec (R Plummer)	0	1	£12,500
Newcastle Hospitals FT	Clinical staff	Medical - Exec	CCRN	Dermatology	Clinical Sessions - Exec (N Reynolds et al)	0	4	£43,750
Newcastle Hospitals FT	Clinical staff	Medical - Exec	CCRN	Metabolic and Endocrine	Clinical Sessions - Exec (P Perros)	0	1	£12,500
Newcastle Hospitals FT	Clinical staff	Medical - Exec	CCRN	Musculo Skeletal	Clinical Sessions - Exec (J Issacs et al)	0	5	£56,250
Newcastle Hospitals FT	Clinical staff	Medical - Exec	CCRN	Musculo Skeletal	Clinical Sessions - Exec (J Bourke)	0	1	£6,250
Newcastle Hospitals FT	Clinical staff	Medical - Exec	CCRN	Surgery	Clinical Sessions - Exec (R Pickard et al)	0	3	£31,250
Newcastle Hospitals FT	Clinical staff	Medical - Exec	CCRN	Renal	Clinical Sessions - Exec (N Kanagasundaram)	0	2	£18,750
Newcastle Hospitals FT	Clinical staff	Medical - Exec	CCRN	Reproductive Health and Childbirth	Clinical Sessions - Exec (N Embleton et al)	0	1	£12,500
Newcastle Hospitals FT	Clinical staff	Medical - Exec	CCRN	Reproductive Health and Childbirth	Clinical Sessions - Exec (S Robson et al)	0	11	£137,500
Newcastle Hospitals FT	Clinical staff	Medical - Exec	CCRN	Cardiovascular	Clinical Sessions - Exec (J Hanley et al)	0	5	£62,500

Newcastle Hospitals FT	Clinical staff	Medical - Exec	CCRN	Oral and Dental	Clinical Sessions - Exec (P Preshaw)	0	1	£6,250
Newcastle Hospitals FT	Clinical staff	Medical - Exec	CCRN	Oral and Dental	Clinical Sessions - Exec (National Lead: J Steele, Uni)	0	2	£30,000
Newcastle Hospitals FT	Clinical staff	Medical - Exec	CCRN	Clinical Genetics	Clinical Sessions - Exec (National Lead: J Burn, Uni)	0	2	£30,000
Newcastle Hospitals FT	Clinical staff	Medical - Exec	CCRN	Clinical Genetics	Clinical Sessions - Exec (K Bushby et al)	0	3	£37,500
Newcastle Hospitals FT	Clinical staff	Medical - Exec	Dendron		Clinical Sessions - Exec (T Williams)	0	1	£6,250
Newcastle Hospitals FT	Clinical staff	Medical - Exec	SRN		Clinical Sessions - Exec (A Dixit et al)	0	4	£43,750
Newcastle Hospitals FT	Clinical staff	Medical - Exec	SRN		Clinical Sessions - Exec (S MacDonald)	0	1	£12,500
Newcastle Hospitals FT	Clinical staff	Medical - Exec	CCRN	Cardiovascular	Clinical Sessions - Exec (S Thomas et al)	0	2	£18,750
Newcastle Hospitals FT	Clinical staff	Medical - Exec	CCRN	Cardiovascular	Clinical Sessions - Exec (A Zaman et al)	0	4	£50,000
Newcastle Hospitals FT	Clinical staff	Medical - Exec	CCRN	Clinical Genetics	Clinical Sessions - Exec (J Goodship et al)	0	2	£25,000
Newcastle Hospitals FT	Clinical staff	Medical - Exec	CCRN	Critical Care	Clinical Sessions - Exec (S Wright et al)	0	2	£25,000
Newcastle Hospitals FT	Clinical staff	Medical - Exec	CCRN	Injury and Accident	Clinical Sessions - Exec (J Wright et al)	0	1	£12,500
Newcastle Hospitals FT	Clinical staff	Medical - Exec	CCRN	Musculo Skeletal	Clinical Sessions - Exec (A Gray)	0	1	£6,250
Newcastle Hospitals FT	Clinical staff	Medical - Exec	CCRN	Musculo Skeletal	Clinical Sessions - Exec (D Walker)	0	1	£12,500
Newcastle Hospitals FT	Clinical staff	Medical - Exec	CCRN	Nervous System Disorders	Clinical Sessions - Exec (K Anderson)	0	1	£6,250
Newcastle Hospitals FT	Clinical staff	Medical - Exec	CCRN	Respiratory	Clinical Sessions - Exec (T DeSoyza et al)	0	4	£43,750
Newcastle Hospitals FT	RM and G	Management	CRN-wide		HR	2	1	£16,558
Newcastle Hospitals FT	Service Support	Radiology	CRN-wide		Radiographer	6	1	£41,540
Newcastle Hospitals FT	Non-Clinical Delivery staff	CLRN Mgmt/Support	CRN-wide		Medical Photographer	5	1	£30,709
Newcastle Hospitals FT	RM and G	Management	CRN-wide		R&D Facilitator	5	1	£25,522
Newcastle Hospitals FT	RM and G	Management	CRN-wide		Clerical Assistant	3	1	£22,309
Newcastle Hospitals FT	Host Cost	Non-staff			Finance			£13,000
Newcastle Hospitals FT	Host Cost	Non-staff			HR & IT			£14,000
Newcastle Hospitals FT	Clinical staff	Nursing	Cancer		Research Nurse (Adult)	6	1	£30,606
Newcastle Hospitals FT	Clinical staff	Nursing	CCRN	Reproductive Health and Childbirth	Midwife	6	1	£33,237
Newcastle Hospitals FT	Clinical staff	Nursing	CCRN	Nervous System Disorders	Nurse Specialist	7	0.1	£4,154
Newcastle Hospitals FT	Clinical staff	Nursing	CCRN	Nervous System Disorders	Nurse Specialist	7	0.1	£4,154
Newcastle Hospitals FT	Clinical staff	Nursing	CCRN	Nervous System Disorders	Nurse Specialist	7	0.1	£4,154
Newcastle Hospitals FT	Clinical staff	Nursing	CCRN	Non-Malignant Haematology	Research Nurse	7	0.1	£4,154
Newcastle Hospitals FT	Non-Clinical Delivery staff	CLRN Mgmt/Support	CCRN	Anaesthetics	Data Manager (A&C)	4	1	£14,516
Newcastle Hospitals FT	Service Support	Other	CCRN	Respiratory	Spec Biomedical Scientist (A&C)	6	1	£30,709
Newcastle Hospitals FT	Clinical staff	Nursing	CCRN	Respiratory	Research Nurse	6	1	£41,540
Newcastle Hospitals FT	Clinical staff	Nursing	CCRN	Reproductive Health and Childbirth	Nursery Nurse	4	1	£22,309
Newcastle Hospitals FT	Non-Clinical Delivery staff	CLRN Mgmt/Support	CCRN	Respiratory	Trials Co-ordinator	7	0.5	£14,840
Newcastle Hospitals FT	Clinical staff	Nursing	CCRN	Clinical Genetics	Research Nurse	6	1	£35,725
Newcastle Hospitals FT	Clinical staff	Medical - Exec	CCRN	Critical Care	Clinical sessions - Exec (I Clement et al)	0	1	£12,500
Newcastle Hospitals FT	Clinical staff	Medical - Exec	CCRN	Ophthalmology	Clinical sessions - Exec (R Gupta et al)	0	1	£12,500
Newcastle Hospitals FT	Clinical staff	Medical - Exec	DRN		Clinical sessions - Exec (N Leech)	0	1	£12,500
Newcastle Hospitals FT	Clinical staff	Medical - Exec	CCRN	Gastro Intestinal	Clinical sessions - Exec (J Mansfield)	0	1	£12,500
Newcastle Hospitals FT	Clinical staff	Medical - Exec	CCRN	Cardiovascular	Clinical sessions - Exec (A Murray)	0	1	£6,250
Newcastle Hospitals FT	Clinical staff	Medical - Exec	CCRN	Metabolic and Endocrine	Clinical sessions - Exec (R Quinton)	0	1	£6,250
Newcastle Hospitals FT	Clinical staff	Medical - Exec	Dendron		Clinical sessions - Exec (L Robinson)	0	1	£12,500
Newcastle Hospitals FT	Clinical staff	Medical - Exec	CCRN	Paediatrics	Clinical sessions - Exec (J Thomas et al)	0	3	£31,250
Newcastle Hospitals FT	Non-Clinical Delivery staff	CLRN Mgmt/Support	NCRN		Data Manager	4	0.6	£11,154

Newcastle Hospitals FT	Non-Clinical Delivery staff	CLRN Mgmt/Support	CRN-wide		Research Matron/Administrator	3	1	£19,247
Newcastle Hospitals FT	Non-Clinical Delivery staff	CLRN Mgmt/Support	CCRN	Age and Ageing	Secretary	3	1	£30,709
Newcastle Hospitals FT	Clinical staff	Nursing	CCRN	Nervous System Disorders	Research Nurse	6	0.8	£33,237
Newcastle Hospitals FT	Clinical staff	Nursing	CCRN	Reproductive Health and Childbirth	Midwife	6	1	£33,232
Newcastle Hospitals FT	Clinical staff	Nursing	CCRN	Reproductive Health and Childbirth	Midwife	6	1	£23,993
Newcastle Hospitals FT	Non-Clinical Delivery staff	CLRN Mgmt/Support	CCRN	Cardiovascular	Data Manager	4	1	£22,309
Newcastle Hospitals FT	Clinical staff	Nursing	CCRN	Critical Care	Research Nurse	6	1	£30,709
Newcastle Hospitals FT	Clinical staff	Nursing	CCRN	Ophthalmology	Research Nurse	6	1	£30,709
Newcastle Hospitals FT	Clinical staff	AHPs	CCRN	Reproductive Health and Childbirth	Sonographer	7	0.4	£23,151
Newcastle Hospitals FT	Clinical staff	Nursing	CCRN	Injury and Accident	CTO	6	0.35	£10,420
Newcastle Hospitals FT	Clinical staff	Nursing	CCRN	Nervous System Disorders	Research Nurse	6	1	£26,794
Newcastle Hospitals FT	Non-Clinical Delivery staff	CLRN Mgmt/Support	CCRN	Surgery	Clerical	2	0.5	£9,079
Newcastle Hospitals FT	Clinical staff	Nursing	CCRN	Musculo Skeletal	Research Nurse	6	1	£26,794
Newcastle Hospitals FT	Clinical staff	Nursing	CCRN	Renal	Research Nurse	6	0.5	£13,397
Newcastle Hospitals FT	Clinical staff	Nursing	CCRN	Cardiovascular	Research Nurse	6	0.5	£13,397
Newcastle Hospitals FT	Non-Clinical Delivery staff	CLRN Mgmt/Support	CCRN	Reproductive Health and Childbirth	Data Manager	4	0.5	£8,997
Newcastle Hospitals FT	Clinical staff	Nursing	CCRN	Paediatrics	Research Nurse	6	1	£26,794
Newcastle Hospitals FT	Non-Clinical Delivery staff	CLRN Mgmt/Support	CCRN	Paediatrics	Data Manager	4	0.5	£8,997
Newcastle Hospitals FT	Clinical staff	Nursing	CCRN	Dermatology	Research Nurse	6	1	£26,794
Newcastle Hospitals FT	Clinical staff	Nursing	CRN-wide		Research Nurse	6	1	£26,794
Newcastle Hospitals FT	Non-Clinical Delivery staff	Trust based	CCRN	Clinical Genetics	Research Study Coordinator	5	1	£22,260
Newcastle Hospitals FT	Non-Clinical Delivery staff	Trust based	CCRN	Ophthalmology	Research Study Coordinator	5	0.5	£11,130
Newcastle Hospitals FT	Non-Clinical Delivery staff	Trust based	CRN-wide		HR Clerical	3	0.5	£10,264
Newcastle Hospitals FT	Service Support	Pathology	CRN-wide		Biochemistry Technician	2	1	£13,619
Newcastle Hospitals FT	Non-Clinical Delivery staff	CLRN Mgmt/Support	CRN-wide		Finance Manager	8a	1	£39,649
Newcastle Hospitals FT	Non-Clinical Delivery staff	CLRN Mgmt/Support	CRN-wide		HR Officer	6	1	£26,794
Newcastle Hospitals FT	Non-Clinical Delivery staff	Trust based	CRN-wide		IT Officer	6	1	£26,794
Newcastle Hospitals FT	Non-Clinical Delivery staff	Trust based	CRN-wide		Secretary	4	0.5	£14,840
Newcastle Hospitals FT	Clinical staff	AHPs	CRN-wide		Medical Physics Technician	5	1	£22,260
Newcastle Hospitals FT	Clinical staff	Nursing	CCRN	Oral and Dental	Dental Nurse	4	1	£17,994
Newcastle Hospitals FT	Clinical staff	Medical - Exec	CCRN	Critical Care	Clinical sessions - Exec (S Baudouin et al)	0	1	£12,500
Newcastle Hospitals FT	Clinical staff	Medical - Exec	CCRN	Nervous System Disorders	Clinical sessions - Exec (G Gorman)	0	1	£12,500
Newcastle Hospitals FT	Clinical staff	Medical - Exec	CCRN	Hepatology	Clinical sessions - Exec (S McPherson et al)	0	2	£25,000
Newcastle Hospitals FT	Clinical staff	Medical - Exec	CCRN	Age and Ageing	Clinical sessions - Exec (J Newton et al)	0	2	£18,750
Newcastle Hospitals FT	Clinical staff	Medical - Exec	CCRN	Musculo Skeletal	Clinical sessions - Exec (W Ng)	0	1	£6,250
Newcastle Hospitals FT	Clinical staff	Medical - Exec	CCRN	Immunology and Inflammation	Clinical sessions - Exec (E Ong)	0	1	£12,500
Newcastle Hospitals FT	Clinical staff	Medical - Exec	NCRN		Clinical sessions - Exec (M Verrill)	0	1	£12,500
Newcastle Hospitals FT	Non-Clinical Delivery staff	CLRN Mgmt/Support	CRN-wide		Pump priming for expansion of industry portfolio for NUTH	7	1	£45,673
Newcastle Hospitals FT	Clinical staff	Medical - Exec	CCRN	Ear nose and Throat	Clinical sessions - Exec (J Wilson et al)	0	1	£12,500
South Tyneside FT	Clinical staff	Nursing	CCRN	Reproductive Health and Childbirth	Research Midwife	7	0.6	£29,351
South Tyneside FT	Clinical staff	Nursing	SRN		Research Nurse	7	0.2	£9,784
South Tyneside FT	Clinical staff	AHPs	CCRN	Cardiovascular	Specialist Nurse	7	0.1	£4,892
South Tyneside FT	Clinical staff	Nursing	CCRN	Gastro Intestinal	Research Nurse	6	1	£33,374
South Tyneside FT	RM and G	Management	CRN-wide		R&D Manager	7	0.6	£29,351
South Tyneside FT	Service Support	Pharmacy	NCRN		Pharmacy	5	0.25	£8,344
South Tyneside FT	Service Support	Pathology	CRN-wide		Pathology	0	0	£9,180
South Tyneside FT	Service Support	Radiology	CRN-wide		Radiology	5	0.2	£6,675
South Tyneside FT	Non-Clinical Delivery staff	CLRN Mgmt/Support	SRN		Data Manager (A&C) - Split between SRN and GI	4	0.5	£13,157
South Tyneside FT	Clinical staff	Nursing	CRN-wide		Non Staff Costs	0	0	£7,500

South Tyneside FT	Clinical staff	Medical - Exec	SRN		Clinical sessions - Exec (J Scott et al)	0	2	£18,750
South Tyneside FT	Clinical staff	Medical - Exec	CCRN	Gastro Intestinal	Clinical sessions - Exec (C Rees et al)	0	2	£25,000
South Tyneside FT	Clinical staff	Medical - Exec	CCRN	Gastro Intestinal	Clinical sessions - Exec (S Panter)	0	1	£6,250
South Tyneside FT	Clinical staff	Medical - Exec	CCRN	Reproductive Health and Childbirth	Clinical sessions - Exec (U Esen)	0	1	£6,250
South Tyneside FT	Clinical staff	Medical - Exec	CCRN	Critical Care	Clinical sessions - Exec (C Frey)	0	1	£6,250
South Tyneside FT	RM and G	Management	CRN-wide		Manager	8d	0.1	£8,312
South Tyneside FT	Non-Clinical Delivery staff	Trust based	CRN-wide		Service lead and Finance support	0	0.05	£6,045
South Tyneside FT	Service Support	Pharmacy	CRN-wide		Pharmacy - CLRN Wide	0	0	£10,000
South Tyneside FT	Clinical staff	AHPs	CCRN	Critical Care	Outreach team	7	0.17	£8,316
South Tyneside FT	Clinical staff	Medical - Local	CCRN	Gastro Intestinal	Clinical sessions - local (C Rees)	0	1	£6,250
South Tyneside FT	Clinical staff	Medical - Exec	CCRN	Cardiovascular	Clinical sessions - Exec (R Mohindra)	0	1	£6,250
South Tyneside FT	Service Support	Pharmacy	NCRN		Pharmacy (non-staff)	0	0	£9,656
South Tyneside FT	Service Support	Radiology	NCRN		Radiology (non-staff)	0	0	£7,095
South Tyneside FT	RM and G	Support	CRN-wide		R&D Administrator	3	0.5	£10,276
Sunderland Teaching PCT	Clinical staff	AHPs	SRN		OT Backfill	6	1	£6,178
Sunderland Teaching PCT	Clinical staff	AHPs	SRN		OT - Getting out of the house	5	1	£26,979
Sunderland Teaching PCT	Clinical staff	Nursing	PCRN		PCT research Nurse	6	1	£36,172
Sunderland Teaching PCT	Clinical staff	Medical - Local	PCRN		SOTW GP PA Sessions	0	0	£12,500
Sunderland Teaching PCT	RM and G	Management	CRN-wide		Finance General Admin	0	0	£10,000
Sunderland Teaching PCT	Non-Clinical Delivery staff	CLRN Mgmt/Support	CRN-wide		HR/Occupational Health	0	0	£10,000
Sunderland Teaching PCT	Service Support	Other	PCRN		PC Practice Support - SoT Practices	0	0	£16,000
Sunderland Teaching PCT	Service Support	Other	PCRN		Study Specific SSC's Trial Specific Costs	0	0	£96,959
Sunderland Teaching PCT	Service Support	Other	PCRN		Study Management - PCRN NTW Research Facilitator	6	0.5	£11,017
Sunderland Teaching PCT	RM and G	Management	CRN-wide		Service Lead - Clinical Governance research Audit	8b	0.1	£6,213
Sunderland Teaching PCT	RM and G	Management	CRN-wide		R&D Lead	7	0.8	£17,166
Sunderland Teaching PCT	RM and G	Management	CRN-wide		RM&G Officer	5	1	£29,432
Sunderland Teaching PCT	RM and G	Management	CRN-wide		Admin Support	3	1	£20,493
Sunderland Teaching PCT	Clinical staff	Nursing	CRN-wide		Non Staff Costs	0	0	£17,000
Sunderland Teaching PCT	Clinical staff	Nursing	MCRN		PCT Research Nurse	6	0.4	£14,469
Sunderland Teaching PCT	Clinical staff	Medical - Local	PCRN		SOTW GP PA session	0	1	£12,500
Sunderland Teaching PCT	Clinical staff	Medical - Local	PCRN		SOTW GP PA session	0	1	£12,500
Sunderland Teaching PCT	Clinical staff	AHPs	PCRN		Speech and Language Therapist	6	0.09	£4,000
Sunderland Teaching PCT	RM and G	Management	CRN-wide		CSP Support	3	0.4	£8,197
Sunderland Teaching PCT	Service Support	Other	PCRN		Research Practice Initiative - South of Tyne	0	0	£105,000
Sunderland Teaching PCT	Non-Clinical Delivery staff	CLRN Mgmt/Support	CRN-wide		Service Lead - Clinical Governance Research Audit	8b	0.1	£6,213
Sunderland Teaching PCT	Non-Clinical Delivery staff	CLRN Mgmt/Support	CRN-wide		R&D Lead	7	0.4	£17,167
CLRN-wide (NUTH)	Service Support	Contingency	CRN-wide		Central CLRN Contingency			£349,678
CLRN-wide (NUTH)	Clinical staff	Medical - Exec	CRN-wide		Clinical Research Fellows			£240,500
CLRN-wide (NUTH)	Service Support	Pharmacy	CRN-wide		CLRN Consultant Pharmacist	8a	0.8	£31,472
CLRN-wide (NUTH)	Clinical staff	Nursing	CRN-wide	Paediatrics (NCRN)	Research Nurse	7	1	£31,472
CLRN-wide (NUTH)	Clinical staff	Nursing	CRN-wide		Nurse Lead (Core Team)	8a	1	£49,437
CLRN-wide (NUTH)	RM and G	Management	CRN-wide		Roving RM&G Support (Core Team)	7	1	£42,884
CLRN-wide (NUTH)	Training	Workforce Development	CRN-wide		Core training programme			£50,000
CLRN-wide (NUTH)	PPI	PPI	CRN-wide		Core CLRN PPI initiatives (Core Team)			£10,000
CLRN-wide (NUTH)	Service Support	Pharmacy	CRN-wide		Lead Technician (NUTH based)	7	1	£51,371
CLRN-wide (NUTH)	Non-Clinical Delivery staff	CLRN Mgmt/Support	CCRN	Musculo Skeletal	Research Study Coordinator	5	0.8	£21,000
CLRN-wide (NUTH)	Non-Clinical Delivery staff	CLRN Mgmt/Support	CCRN	Reproductive Health and Childbirth	Research Study Coordinator	5	1	£26,000
CLRN-wide (NUTH)	Non-Clinical Delivery staff	CLRN Mgmt/Support	CCRN	Urogenital	Research Study Coordinator	5	0.8	£21,000
CLRN-wide (NUTH)	Non-Clinical Delivery staff	CLRN Mgmt/Support	CCRN	Ophthalmology	Research Study Coordinator	5	1	£23,833
CLRN-wide (NUTH)	Non-Clinical Delivery staff	CLRN Mgmt/Support	CCRN		Research Study Coordinator	5	2	£35,250

CLRN-wide (NUTH)	Non-Clinical Delivery staff	CLRN Mgmt/Support	CCRN		SG Co-ordinator	5	1		£8,812
CLRN-wide (NUTH)	RM and G	Management	CRN-wide		RM&G Facilitator	5	1		£22,000
CLRN-wide (NUTH)	Non-Clinical Delivery staff	CLRN Mgmt/Support	CRN-wide		CLRN Administrator	4	1		£25,000

Appendix 2 – SG Leads

Specialty Group	Local Lead
Age and Ageing	Professor Julia Newton
Cardiovascular	Professor Bernard Keavney
Genetics	Professor Judith Goodship
Critical care	Dr Simon Baudouin
Dermatology	Professor Nick Reynolds
Ear, Nose and Throat (ENT)	Professor Janet Wilson
Gastrointestinal	Dr John Mansfield
Health Services Research	Professor Elaine McColl
Hepatology	Professor David Jones
Infectious Diseases and Microbiology ²	Dr Edmund Ong
Injuries and Accidents	Dr John Wright
Metabolic and Endocrine	Professor Simon Pearce
Musculoskeletal	Professor John Isaacs
Neurology	Professor Patrick Chinnery
Non-malignant Haematology ²	Dr Tina Biss
Ophthalmology	Mr David Steel
Oral and Dental	Professor Jimmy Steele
Paediatrics ¹	Professor Allan Colver
Palliative Care ²	Dr Rachel Quibell Dr Mary Comiskey
Public Health Research	Dr Ruth Bell

¹ Paediatrics includes Medicines for Children.

Specialty Group	Local Lead
Renal	Professor Neil Sheerin
Reproductive Health & Childbirth	Professor Stephen Robson
Respiratory	Dr Anthony De-Soyza
Surgery ²	Professor Tom Lennard
Urogenital	Professor Robert Pickard

¹ Paediatrics includes Medicines for Children.

² New Specialty Group formed since August 2010

In addition to the Local Specialty Groups, the CLRN hosts two National Specialty Group Chairs.

Specialty Group	National Lead
Genetics	Professor Sir John Burn
Oral and Dental	Professor Jimmy Steele

Appendix 3 – Recruitment to Target (4 January 2011)

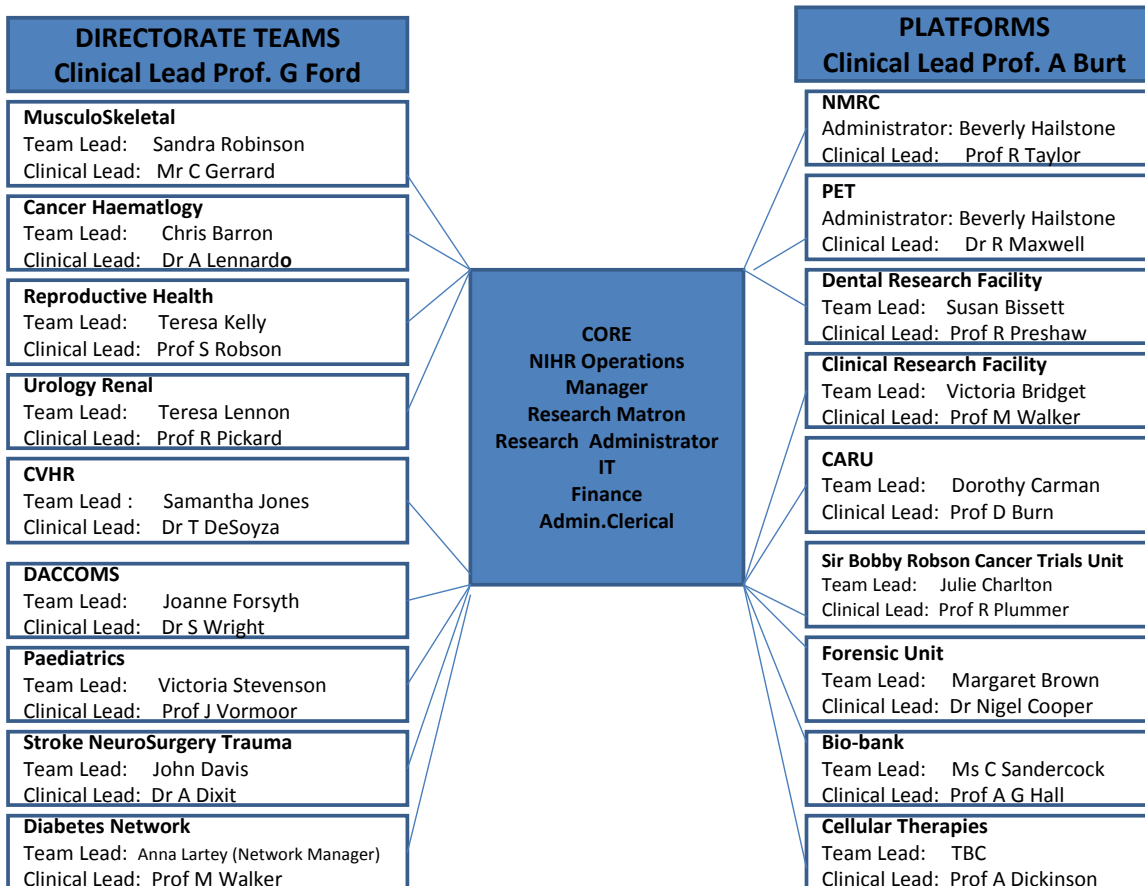
ID	Acronym	CI	SG	Scope	Sample Size	Current Rec Total	Target Per Month	Actual Per Month	% to Target
2442	DILIGEN	Ann Daly	Hepatology	UKMC	1000	271	13	6	45%
3545	The inheritance and expression of mitochondrial DNA disease	P Chinnery	Nervous System Disorders	IMC	500	386	4	4	104%
3672	Atrial repolarisation: New measures for non-invasive assessment of heart disease	Philip Langley	Cardiovascular	SC	400	250	6	4	63%
4616	Azithromycin trial	Paul Corris	Respiratory	SC	64	49	1	1	81%
4722	FAST-CHD	Bernard Keavney	Cardiovascular	UKMC	3000	1614	43	35	81%
4858	Blood pressure measurement accuracy	Alan Murray	Cardiovascular	SC	300	133	10	5	46%
5085	Folic Acid Absorption	David Jones	Hepatology	SC	40	7	2	1	24%
5134	Complement in aHUS	Tim Goodship	Renal	IMC	100	42	2	1	60%
5164	Complement polymorphisms in transplantation	Neil Sheerin	Renal	UKMC	1000	53	42	4	8%
5258	Kinship and genetic journeys	Janice McLaughlin	Clinical Genetics	SC	55	45	3	2	82%
5324	An investigation of women's experiences of an IVF egg sharing scheme	Erica Haimes	Reproductive Health & Childbirth	SC	65	0	2	0	0%
5374	Mitochondrial genetics, HIV infection and anti-retroviral therapy	P Chinnery	Infectious Diseases & Microbiology	SC	80	46	2	1	67%
5623	MECH-UVB-PSOR	N J Reynolds	Dermatology	SC	121	166	2	3	137%
5646	Isolation of hSSC	Karim Nayernia	Reproductive Health & Childbirth	SC	14	6	<1	0	100%
5688	JULIA (Juvenile Idiopathic Arthritis)	Helen Foster	Musculoskeletal	SC	60	49	2	2	82%
5755	Freeman Early Arthritis Cohort	John Isaacs	Musculoskeletal	SC	1000	840	19	16	84%
5791	Novel regulation of myometrial contractility by histone deacetylase 8 (HDAC8)	S C Robson	Reproductive Health & Childbirth	SC	600	752	17	27	157%
6152	Pharmaco Genetics - DLE	Simon Meggitt	Dermatology	UKMC	200	204	3	5	148%
6169	TFS	John Isaacs	Immunology and Inflammation	SC	200	207	6	6	104%
6324	Stem cell models of the benign and malignant prostate	Robert Pickard	Urogenital	SC	150	412	3	8	275%
6395	Ex-vivo donor lung study	Andrew J Fisher	Respiratory	SC	20	16	1	1	95%
6399	EMT in the lung allograft	Andrew J Fisher	Respiratory	SC	40	55	1	2	143%
6554	Origin of cervical cytokines in preterm labour	S C Robson	Reproductive Health & Childbirth	SC	160	63	5	3	49%
6639	MECH-PSOR-CLEAR	N J Reynolds	Dermatology	SC	100	148	1	1	188%
6804	1000 Families	Mark Pearce	Musculoskeletal	SC	500	312	42	26	62%
6845	Communication development of children with motor disorders	Lindsay Pennington	Paediatrics	UKMC	120	48	2	2	124%
6855	Autonomic dysfunction in ME/CFS	Julia Newton	Age and Ageing	SC	200	150	7	6	81%
6863	HCV Intralipid kinetics study	M Bassendine	Infectious Diseases & Microbiology	SC	12	6	1	0	54%
6981	Role of interleukins 6 and 8 in sporadic miscarriage	Judith N Bulmer	Reproductive Health & Childbirth	SC	200	0	5	0	0%
7018	Innate defence mechanisms in female cystitis	Ased Ali	Urogenital	SC	100	97	3	4	159%
7088	Genetics study in inflammatory bowel disease (IBD)	John Mansfield	Gastrointestinal	UKMC	7000	3718	58	37	64%

7216	LipidPreg	S C Robson	Reproductive Health & Childbirth	SC	16	10	1	1	63%
7229	The national programme for enhanced pneumococcal surveillance	David Spencer	Paediatrics	UKMC	10000	308	83	6	7%
7245	Measure of bladder contractility using the penile cuff	Robert Pickard	Urogenital	SC	80	95	3	3	119%
7318	Development and evaluation of information services	Richard Walker	Health Services Research	UKMC	2000	159	54	7	13%
7326	Exercise training in mitochondrial disease - Assessing the benefits	Doug Turnbull	Nervous System Disorders	IMC	10	10	<1	0	100%
7373	CAP children aetiology	Julia Clark	Paediatrics	UKMC	300	171	20	11	57%
7413	BetaSNP	Georg Lietz	Public Health Research	SC	200	89	10	6	56%
7430	Genetic eye diseases and inherited blindness	P Chinnery	Nervous System Disorders	UKMC	100	50	2	1	63%
7456	Anti-muscarinic receptor antibodies. Sjogren's syndrome and autonomic dysfunction	Wan-Fai Ng	Musculoskeletal	UKMC	220	165	13	10	75%
7630	Survival, quality of life and health resource	Stephen Bourke	Respiratory	SC	800	1051	32	42	131%
7727	Saliva biomarkers for diagnosis of periodontal disease	Philip M Preshaw	Oral & Dental	SC	135	77	10	6	67%
7774	Outflow tract development in normal and abnormal human embryos	S C Robson	Reproductive Health & Childbirth	SC	500	364	14	19	134%
7778	Decision making in intermittent distance exotropia (X(T))	Richard G Thomson	Ophthalmology	UKMC	110	45	8	3	44%
7904	STITCH (TRAUMA)	David Mendelow	Injuries & Accidents	IMC	840	24	22	2	9%
8552	Mitocohort	Robert McFarland	Nervous System Disorders	UKMC	300	424	7	19	270%
8557	Revival of Stem cells in Addison's disease (RoSA)	Simon Pearce	Metabolic & Endocrine	SC	12	4	1	0	89%
8558	Transition of young people with complex health needs	Allan F Colver	Health Services Research	SC	150	21	21	3	14%
8579	Improving the safety and efficacy of anticoagulation therapy	Hilary Wynne	Non-malignant Haematology	SC	180	27	6	5	75%
8584	Muscle Bioenergetic Abnormality in ME/CFS	David Jones	Immunology and Inflammation	SC	10	10	1	2	267%
8594	Fatigue in primary Sjogren's syndrome	Wan-Fai Ng	Musculoskeletal	UKMC	500	1	16	0	0%
8625	Assessment of home uroflowmetry	Alison Bray	Urogenital	SC	80	12	7	1	17%
8674	Exercise training in sarcopenia	D M Turnbull	Nervous System Disorders	SC	36	0	3	0	0%
8682	Lactation and Breastfeeding Frequency Research	Helen Ball	Reproductive Health & Childbirth	SC	100	56	11	11	101%
8856	Benefits of extended screening testing in newborns (BEST)	Julia Clark	Paediatrics	UKMC	1000	18	45	4	8%
8857	Promoting patient involvement in improving safety	Richard Thomson	Health Services Research	UKMC	184	43	13	7	55%
8954	Increasing patching for amblyopia	M P Clarke	Ophthalmology	IMC	178	4	11	1	7%
9121	Physical activity during pregnancy and maternal blood glucose levels	Tarja Kinnunen	Reproductive Health & Childbirth	SC	34	5	3	2	49%
9137	AntiBiofilm molecules in Chronic rhinosinusitis (ABC) study	Mohamed ElBadawey	ENT	SC	50	0	1	0	0%
9149	Cardiac adaptations to aerobic exercise in mitochondrial disease	Michael Trenell	Cardiovascular	SC	24	9	2	3	163%
9240	Choosing urinary drainage procedure with cystectomy for bladder cancer	Susan Wong	Urogenital	UKMC	126	2	9	1	7%
9470	Complement susceptibility factors in MPGN	Tim Goodship	Clinical Genetics	SC	100	0	4	0	0%
9573	SUPER Surgery and Physiotherapy for Prolapse Research	Doreen McClurg	Reproductive Health & Childbirth	UKMC	60	0	4	0	0%

>79% 50% - 79% <50% 

Appendix 4 – Newcastle Hospitals NHS Foundation Trust Delivery Infrastructure

The diagram below has been provided by Paddy Stevenson, NIHR Operations Manager in Newcastle upon Tyne NHS FT. Paddy and Andrea Stutt, the Research Matron provide the management link between the CLRN and the Trust delivery infrastructure.



Appendix 5 – NTW CLRN Training Programme 2011

Introduction to GCP

Accessed via NIHR's Learning Management System

GCP: an update

January 21 st	09:30-11:30	Royal Victoria Infirmary	30
January 21 st	13:30-15:30	Royal Victoria Infirmary	30
April 14 th	09:30-11:30	Sunderland Royal Hospital	30
May 18 th	10:00-12:00	North Tyneside General Hospital	40
July 13 th	10:00-12:00	South Tyneside General Hospital	40
September 13 th	13:30-15:30	Bevan House, Gosforth	30
October 5 th	14:00-16:00	Queen Elizabeth Hospital, Gateshead	30
December 6 th	10:00-12:00	Pemberton House, Sunderland	30

Human Tissue Act

January 25 th	09:30-13:00	Newcastle University Research Beehive	40
July 6 th	09:30-13:00	International Centre for Life	40
October 20 th	09:30-13:00	Clinical Ageing Research Unit, Newcastle	40

Informed Consent & Ethics

March 10 th	09:00-17:00	Clinical Ageing Research Unit, Newcastle	40
May 12 th	09:00-17:00	Newcastle University Research Beehive	40
July 22 nd	09:00-17:00	International Centre for Life	40
December 8 th	09:00-17:00	Royal Victoria Infirmary	40

Insurance and Indemnity in Research

March 30 th	09:00-13:00	Clinical Ageing Research Unit, Newcastle	30
September 9 th	09:00-13:00	Queen Elizabeth Hospital, Gateshead	30

Liberating Information for Health

January 31 st	09:00-16:30	Royal Victoria Infirmary	30
October 14 th	09:00-16:30	International Centre for Life	30

Management Skills

April 7 th	09:00-16:30	(Project Mgt) Northumbria House, Cobalt Business Park	25
July 19 th	09:00-16:30	(Change Mgt) Queen Elizabeth Hospital, Gateshead	25
November 3 rd	09:00-16:30	(Project Mgt) Clinical Ageing Research Unit, Newcastle	25

Mental Capacity Act

February 15 th	09:00-14:30	Newcastle University Research Beehive	40
June 10 th	09:00-14:30	Clinical Ageing Research Unit, Newcastle	40
October 19 th	09:00-14:30	International Centre for Life	40
December 6 th	09:00-14:30	Newcastle University Research Beehive	40

Professional Presentations

May 9 th	09:15-17:00	(Part 1) South Tyneside General Hospital	8
May 16 th	09:15-12:30	(Part 2) South Tyneside General Hospital	8

Radiation Regulations in Research

March 8 th	09:00-13:00	Freeman Hospital	40
September 7 th	09:00-13:00	Clinical Ageing Research Unit, Newcastle	40

R&D Approvals Process

February 18 th	11:00-13:00	Freeman Hospital	50
April 7 th	11:00-13:00	Sunderland Royal Hospital	50
May 10 th	15:00-17:00	Royal Victoria Infirmary	100
June 30 th	11:00-13:00	Hexham General Hospital	40
September 7 th	11:00-13:00	South Tyneside General Hospital	60
November 25 th	11:00-13:00	Queen Elizabeth Hospital, Gateshead	60

Teams & Leadership

April 15 th	09:00-16:30	St Nicholas Hospital, Gosforth	16
July 13 th	09:00-16:30	South Tyneside General Hospital	16

Writing to Persuade

March 23 rd	09:00-16:30	Bevan House, Gosforth	8
------------------------	-------------	-----------------------	---