

NIHR Clinical Research Network (CRN) Portfolio

What is the NIHR CRN Portfolio?

The NIHR CRN Portfolio is part of the UK Clinical Research Network Portfolio, which comprises the network Portfolios for England, Northern Ireland, Scotland and Wales. These four Portfolios are held on a single information system called the UKCRN Portfolio Database.

The Portfolio Database is a public, searchable database. The NIHR CRN Portfolio consists of high quality clinical research studies that are eligible for consideration for support from the NIHR Clinical Research Network in England.

The Portfolio Database captures activity data and provides analysis tools to facilitate active management of current studies run within the Clinical Research Network.

Activity data from the NIHR CRN Portfolio are used to inform the allocation of NHS infrastructure for research (including NHS Support Costs) and supports the performance management of the Clinical Research Network.

What are the benefits?

Studies included in the NIHR CRN Portfolio have access to NHS infrastructure for research. This support includes NHS Service Support and Research Management and Governance Support via our Network. Study teams can also register for an ISRCTN directly via the UKCRN Portfolio Database and, staff working on NIHR CRN Portfolio studies have access to the training opportunities offered by the NIHR CRN.

Is my study eligible for consideration for NIHR CRN support?

In England, the Department of Health has established the eligibility criteria for Clinical Research Network support.

Our CRN Portfolio team assesses eligibility for Clinical Research Network support on behalf of the Department of Health in England.

Studies that are eligible for consideration for this support are added to the NIHR CRN Portfolio.

Find out more at:

www.crnc.nihr.ac.uk/portfolio_eligibility

Visit our website for more information:
www.crnc.nihr.ac.uk/portfolio

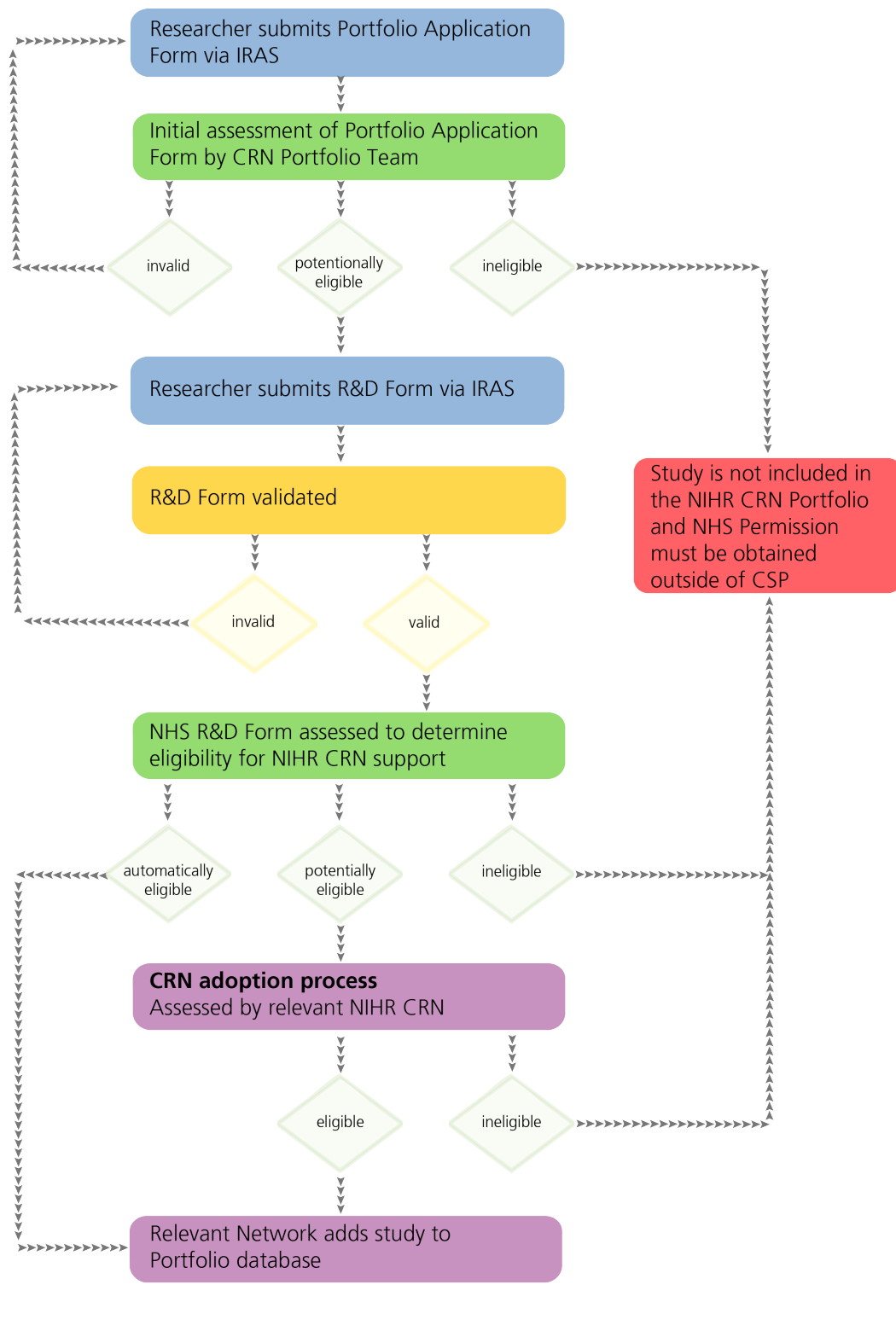
Find a Network contact:
www.crnc.nihr.ac.uk/portfolio_help

Contact the Portfolio Helpdesk (general enquiries):
portfolio.helpdesk@nihr.ac.uk



How do I apply for Clinical Research Network support?

For non-commercial studies applying for NIHR Clinical Research Network support the NIHR Coordinated System for gaining NHS Permission is the only route of entry - see the flow chart below. For more information go to: www.crncc.nihr.ac.uk/accessing_network_support



For commercial studies either contact the appropriate Network directly or submit a Portfolio Application Form. Find out more at: www.supportmystudy.nihr.ac.uk

